

Product datasheet for PH304205

L3HYPDH (NM_144581) Human Mass Spec Standard

Product data:

Product Type:	Mass Spec Standards
Description:	C14orf149 MS Standard C13 and N15-labeled recombinant protein (NP_653182)
Species:	Human
Expression Host:	HEK293
Expression cDNA Clone or AA Sequence:	RC204205
Predicted MW:	38.2 kDa
Protein Sequence:	>RC204205 protein sequence Red=Cloning site Green=Tags(s)
	MESALAVPWLPPHDPGTPVLSVDMHTGGEPLRIVLAGCPEVSGPTLLAKRRYMRQHLDHVRRLMFEP GHRDMYGAVLVPSELPAHLGVLFLHNEGYSMCGHAVLALGRFALDFGLVPAPPAGTREARVNIHCPCG LVTAFVACEDGRSHGPVRFHSPAFVLATDLMVDVPGHGKVMVDIAYGGAFYAFVTAEKGLDICSATR DLVDAASAVTEAVKAQFKINHPDSEDLAFLYGTILTDGKDAYTKEPTTNICVFADEQVDRSPTGSGVTAR IALQYHKGLLELNQMRAFKSSATGSVFTGKAVREKCGDFKAVIVEVSGQAHYTGASFIIEDDDPLRDG FLLK
	TRTRPLEQKLI SEEDLAANDILDYKDDDDKV
Tag:	C-Myc/DDK
Purity:	> 80% as determined by SDS-PAGE and Coomassie blue staining
Concentration:	>0.05 µg/µL as determined by microplate BCA method
Labeling Method:	Labeled with [U- ¹³ C ₆ , ¹⁵ N ₄]-L-Arginine and [U- ¹³ C ₆ , ¹⁵ N ₂]-L-Lysine
Buffer:	25 mM Tris-HCl, 100 mM glycine, pH 7.3
Storage:	Store at -80°C. Avoid repeated freeze-thaw cycles.
Stability:	Stable for 3 months from receipt of products under proper storage and handling conditions.
RefSeq:	NP_653182
RefSeq Size:	1381
RefSeq ORF:	1062
Synonyms:	C14orf149
Locus ID:	112849



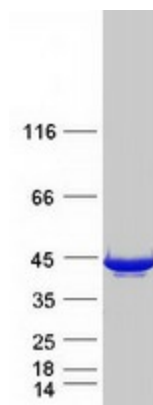
[View online »](#)

UniProt ID: [Q96EM0](#)

Cytogenetics: 14q23.1

Summary: The protein encoded by this gene is a dehydratase that converts trans-3-hydroxy-L-proline to delta(1)-pyrroline-2-carboxylate. This enzyme may function to degrade dietary proteins that contain trans-3-hydroxy-L-proline as well as other proteins such as collagen IV. The encoded protein can be converted to an epimerase by changing a threonine to a cysteine at a catalytic site. [provided by RefSeq, Sep 2016]

Product images:



Coomassie blue staining of purified L3HYPDH protein (Cat# [TP304205]). The protein was produced from HEK293T cells transfected with L3HYPDH cDNA clone (Cat# [RC204205]) using MegaTran 2.0 (Cat# [TT210002]).