

Product datasheet for PH304204

SIL1 (NM_001037633) Human Mass Spec Standard

Product data:

Product Type:	Mass Spec Standards
Description:	SIL1 MS Standard C13 and N15-labeled recombinant protein (NP_001032722)
Species:	Human
Expression Host:	HEK293
Expression cDNA Clone or AA Sequence:	RC204204
Predicted MW:	52.1 kDa
Protein Sequence:	>RC204204 protein sequence Red=Cloning site Green=Tags(s)

MAPQSLPSSRMAPLGMLLGLLMAACFTFCLSHQNLKEFALTNPEKSSTKETERKETKAEELDAEVLEVF
HPTHEWQALQPGQAVPAGSHVRLNLQTGEREAKLQYEDKFRNNLKGKRLDINTNTYTSQDLKSALAKFKE
GAEMESSKEDKARQAEVKRLFRPIEELKKDFDELNVVIEITDMQIMVRLINKFNSSSSSLEEKIAALFDLE
YYVHQMDNAQDLLSFGGLQVVINGLNSTEPLVKEYAAFVLGAAFSSNPKVQVEAIEGGALQKLLVILATE
QPLTAKKKVLFALCSLLRHFPYAQRQFLKLGGLQVLRTLVQEKGTVEVLAVRVVTLVLDLVEKMFEEEE
ELTQEMSPEKLQYRQVHLLPGLWEQGWCEITAHLLALPEHDAREKVLQTLGVLLTTCRDRYRQDPQLGR
TLASLQAEYQVLASLELQDGEDEGYFQELLGSVNSLLKELR

TRTRPLEQKLISEEDLAANDILDYKDDDDKV

Tag:	C-Myc/DDK
Purity:	> 80% as determined by SDS-PAGE and Coomassie blue staining
Concentration:	>0.05 µg/µL as determined by microplate BCA method
Labeling Method:	Labeled with [U- ¹³ C ₆ , ¹⁵ N ₄]-L-Arginine and [U- ¹³ C ₆ , ¹⁵ N ₂]-L-Lysine
Buffer:	25 mM Tris-HCl, 100 mM glycine, pH 7.3
Storage:	Store at -80°C. Avoid repeated freeze-thaw cycles.
Stability:	Stable for 3 months from receipt of products under proper storage and handling conditions.
RefSeq:	<u>NP_001032722</u>
RefSeq Size:	1996
RefSeq ORF:	1383
Synonyms:	BAP; MSS; ULG5



[View online »](#)

Locus ID: 64374

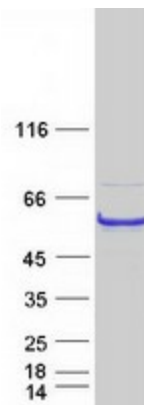
UniProt ID: [Q9H173](#), [A0A0S2Z6B4](#)

Cytogenetics: 5q31.2

Summary: This gene encodes a resident endoplasmic reticulum (ER), N-linked glycoprotein with an N-terminal ER targeting sequence, 2 putative N-glycosylation sites, and a C-terminal ER retention signal. This protein functions as a nucleotide exchange factor for another unfolded protein response protein. Mutations in this gene have been associated with Marinesco-Sjogren syndrome. Alternate transcriptional splice variants have been characterized. [provided by RefSeq, Jul 2008]

Protein Families: Protease, Secreted Protein, Transmembrane

Product images:



Coomassie blue staining of purified SIL1 protein (Cat# [TP304204]). The protein was produced from HEK293T cells transfected with SIL1 cDNA clone (Cat# [RC204204]) using MegaTran 2.0 (Cat# [TT210002]).