

Product datasheet for PH304199

Claudin 2 (CLDN2) (NM_020384) Human Mass Spec Standard

Product data:

Product Type:	Mass Spec Standards
Description:	CLDN2 MS Standard C13 and N15-labeled recombinant protein (NP_065117)
Species:	Human
Expression Host:	HEK293
Expression cDNA Clone or AA Sequence:	RC204199
Predicted MW:	24.5 kDa
Protein Sequence:	>RC204199 protein sequence Red=Cloning site Green=Tags(s) MASLGLQLVGYILGLLGTLVAMLLPSWKTSSYVVGASIVTAVGFSGKLWMECATHSTGITQCDIYSTL LGLPADIQAAQAMMVTSSAISLACIISVVGMRCTVFCQESRAKDRVAVAGGVFFILGLLGFIPVAVNL HGILRDFYSPLVPDSMKFEIGEALYLGIISSLFSLIAGIILCFSCSSQRNRSNYYDAYQAQPLATRSSPR PGQPPKVKSEFNSYSLTGYV TRTRPLEQKLI SEEDLAANDILDYKDDDDKV
Tag:	C-Myc/DDK
Purity:	> 80% as determined by SDS-PAGE and Coomassie blue staining
Concentration:	>0.05 µg/µL as determined by microplate BCA method
Labeling Method:	Labeled with [U- ¹³ C ₆ , ¹⁵ N ₄]-L-Arginine and [U- ¹³ C ₆ , ¹⁵ N ₂]-L-Lysine
Buffer:	25 mM Tris-HCl, 100 mM glycine, pH 7.3
Storage:	Store at -80°C. Avoid repeated freeze-thaw cycles.
Stability:	Stable for 3 months from receipt of products under proper storage and handling conditions.
RefSeq:	NP_065117
RefSeq Size:	2998
RefSeq ORF:	690
Synonyms:	OAZON
Locus ID:	9075
UniProt ID:	P57739



[View online »](#)

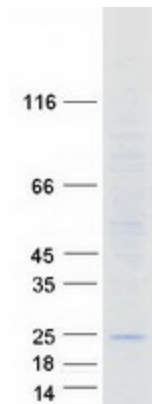
Cytogenetics: Xq22.3

Summary: This gene product belongs to the claudin protein family whose members have been identified as major integral membrane proteins localized exclusively at tight junctions. Claudins are expressed in an organ-specific manner and regulate tissue-specific physiologic properties of tight junctions. This protein is expressed in the intestine. Alternatively spliced transcript variants with different 5' untranslated region have been found for this gene.[provided by RefSeq, Jan 2010]

Protein Families: Transmembrane

Protein Pathways: Cell adhesion molecules (CAMs), Leukocyte transendothelial migration, Tight junction

Product images:



Coomassie blue staining of purified CLDN2 protein (Cat# [TP304199]). The protein was produced from HEK293T cells transfected with CLDN2 cDNA clone (Cat# [RC204199]) using MegaTran 2.0 (Cat# [TT210002]).