

Product datasheet for PH304193

Integrin beta 7 (ITGB7) (NM_000889) Human Mass Spec Standard

Product data:

Product Type:	Mass Spec Standards
Description:	ITGB7 MS Standard C13 and N15-labeled recombinant protein (NP_000880)
Species:	Human
Expression Host:	HEK293
Expression cDNA Clone or AA Sequence:	RC204193
Predicted MW:	86.9 kDa
Protein Sequence:	>RC204193 protein sequence Red=Cloning site Green=Tags(s)

MVALPMVLVLLLVLSRGESELDKIPSTGDATEWRNPHLSMLGSCQPAPSCQKCILSHPSCAWCKQLNFT
ASGEAEARRCARREELLARGCPLEELPEPRGQQEVLQDQPLSQGARGEGATQLAPQRVVRTLRPGEPQQL
QVRFLRAEGYPVDLYLMDLSYMKDDLRLVRLGHALLVRLQEVTHSVRIGFGSFVDKTVLPFVSTVPS
KLRHPCPTLRLERCQSPFSFHHVLSLTGDAQAFEREVGRQSVSGNLDSPGGFDAILQAALCQEIQIGWRNV
SRLLVFTSDDTFHTAGDGKLGIFMPSDGHCHLDSNGLYSRSTEFDYPVSGVQAQALSAANIQPIFAVTS
AALPVYQELSKLIPKSAVGELSEDSSNVVQLIMDAYNSLSSVTLEHSSLPPGVHISYESQCEGPEKREG
KAEDRGQCNHVRINQTVTFWVSLQATHCLPEHLLRLRALGFSEELIVELHTLDCNCSDTQPQAPHCS
GQGHLCQGVCSAPGRLGRLCECSVAELSSPDLESGCRAPNGTGPLCSGKGCQCGRCSGSSGHLCE
CDDASCRHEGILCGGFGRQCQGVCHCHANRTGRACECSGDMDSCLISPEGGLCSGHGRCKNRCQCLDGY
YGALCDQCPGCKTPCERHRDCAECGAFRTGPLATNCSTACAHTNVTLALAPILDDGWCKERTLDNQLFF
LVEDDARGTVVLRVPRQEKADHTQAIIVLGCVGGIVAVGLGLVLAAYLSVEIYDRREYSRFEKEQQQLNW
KQDSNPLYKSAITTTINPRFQEADSPTL

SGPTRTRPLEQKLI SEEDLAANDILDYKDDDDKV

Tag:	C-Myc/DDK
Purity:	> 80% as determined by SDS-PAGE and Coomassie blue staining
Concentration:	>0.05 µg/µL as determined by microplate BCA method
Labeling Method:	Labeled with [U- ¹³ C ₆ , ¹⁵ N ₄]-L-Arginine and [U- ¹³ C ₆ , ¹⁵ N ₂]-L-Lysine
Buffer:	25 mM Tris-HCl, 100 mM glycine, pH 7.3
Storage:	Store at -80°C. Avoid repeated freeze-thaw cycles.
Stability:	Stable for 3 months from receipt of products under proper storage and handling conditions.
RefSeq:	NP_000880



[View online »](#)

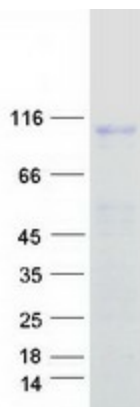
RefSeq Size:	2878
RefSeq ORF:	2394
Locus ID:	3695
UniProt ID:	P26010
Cytogenetics:	12q13.13

Summary: This gene encodes a protein that is a member of the integrin superfamily. Members of this family are adhesion receptors that function in signaling from the extracellular matrix to the cell. Integrins are heterodimeric integral membrane proteins composed of an alpha chain and a beta chain. The encoded protein forms dimers with an alpha4 chain or an alphaE chain and plays a role in leukocyte adhesion. Dimerization with alpha4 forms a homing receptor for migration of lymphocytes to the intestinal mucosa and Peyer's patches. Dimerization with alphaE permits binding to the ligand epithelial cadherin, a calcium-dependent adhesion molecule. Alternate splicing results in multiple transcript variants. Additional alternatively spliced transcript variants of this gene have been described, but their full-length nature is not known. [provided by RefSeq, Sep 2013]

Protein Families: Druggable Genome, Transmembrane

Protein Pathways: Arrhythmogenic right ventricular cardiomyopathy (ARVC), Cell adhesion molecules (CAMs), Dilated cardiomyopathy, ECM-receptor interaction, Focal adhesion, Hypertrophic cardiomyopathy (HCM), Regulation of actin cytoskeleton

Product images:



Coomassie blue staining of purified ITGB7 protein (Cat# [TP304193]). The protein was produced from HEK293T cells transfected with ITGB7 cDNA clone (Cat# [RC204193]) using MegaTran 2.0 (Cat# [TT210002]).