

Product datasheet for PH304186

PEDF (SERPINF1) (NM_002615) Human Mass Spec Standard

Product data:

Product Type:	Mass Spec Standards
Description:	SERPINF1 MS Standard C13 and N15-labeled recombinant protein (NP_002606)
Species:	Human
Expression Host:	HEK293
Expression cDNA Clone or AA Sequence:	RC204186
Predicted MW:	46.4 kDa
Protein Sequence:	>RC204186 protein sequence Red=Cloning site Green=Tags(s)
	<p>MQALVLLLCIGALLGHSSCQNPASPPEEGSPDPDSTGALVEEEDPFFKVPVNKLA AVSNFGYDL YRVRS SMSPTTNVLLSPLSVATALSALSLGAEQRTE SIIHRALYYDLISSPDIHGTYKELLDVTARQKNLKSAS RIVFEKKLRIKSSFVAPLEKSYGTRPRVLTGNPRLDLQEINNWWQAQMGKGLARSTKEIPDEISILLG V AHFKGQWVTKFDSRKTSLDFYLD EERTVRVPMMSDPKAVLRYGLSDLSCKIAQLPTGSM SIIFFLPL KVTQNLTLIEESLTSEFIHDIDRELKTVQAVLTPVKLKL SYEGEVTKSLQEMKLQSLFDSPDFSKITGKP IKLTQVEHRAGFEWNEDGAGTTPSPGLQPAHLTFPLDYHLNQPFI FVLRD TDTGALLFIGKILDPRGP</p> <p>TRTRPLEQKLI SEEDLAANDILDYKDDDDKV</p>
Tag:	C-Myc/DDK
Purity:	> 80% as determined by SDS-PAGE and Coomassie blue staining
Concentration:	>0.05 µg/µL as determined by microplate BCA method
Labeling Method:	Labeled with [U- ¹³ C ₆ , ¹⁵ N ₄]-L-Arginine and [U- ¹³ C ₆ , ¹⁵ N ₂]-L-Lysine
Buffer:	25 mM Tris-HCl, 100 mM glycine, pH 7.3
Storage:	Store at -80°C. Avoid repeated freeze-thaw cycles.
Stability:	Stable for 3 months from receipt of products under proper storage and handling conditions.
RefSeq:	<u>NP_002606</u>
RefSeq Size:	1552
RefSeq ORF:	1254
Synonyms:	EPC-1; OI6; OI12; PEDF; PIG35
Locus ID:	5176



[View online »](#)

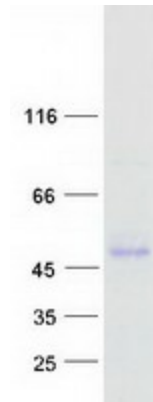
UniProt ID: [P36955](#), [A0A140VKF3](#)

Cytogenetics: 17p13.3

Summary: This gene encodes a member of the serpin family that does not display the serine protease inhibitory activity shown by many of the other serpin proteins. The encoded protein is secreted and strongly inhibits angiogenesis. In addition, this protein is a neurotrophic factor involved in neuronal differentiation in retinoblastoma cells. Mutations in this gene were found in individuals with osteogenesis imperfecta, type VI. [provided by RefSeq, Aug 2016]

Protein Families: Druggable Genome, Secreted Protein

Product images:



Coomassie blue staining of purified SERPINF1 protein (Cat# [TP304186]). The protein was produced from HEK293T cells transfected with SERPINF1 cDNA clone (Cat# [RC204186]) using MegaTran 2.0 (Cat# [TT210002]).