

Product datasheet for PH304183

ATP1B3 (NM_001679) Human Mass Spec Standard

Product data:

Product Type:	Mass Spec Standards
Description:	ATP1B3 MS Standard C13 and N15-labeled recombinant protein (NP_001670)
Species:	Human
Expression Host:	HEK293
Expression cDNA Clone or AA Sequence:	RC204183
Predicted MW:	31.5 kDa
Protein Sequence:	>RC204183 protein sequence Red=Cloning site Green=Tags(s) MTKNEKSLNQLAEWKLFIYNPTTGEFLGRTAKSWGLILLFYLVFYGFLAALFSFTMWVMLQTLNDEV KYRDQIPSPGLMVFPKPVTALEYTFSRSDPTSAGYIEDLKKFLKPYTLEEQKNLTVCPDGFALFEQKGPV YVACQFPISLLQACSGMNDPDFGYSQGNPCILVKMNRIIGLKPEGVPRIDCVSKNEDIPNAVYPHNGMI DLKYFPYYGKKLHVGYLQPLVAVQVSFAPNNTGKEVTVECKIDGSANLKSQDDRDKFLGRVMFKITARA TRTRPLEQKLI SEEDLAANDILDYKDDDDKV
Tag:	C-Myc/DDK
Purity:	> 80% as determined by SDS-PAGE and Coomassie blue staining
Concentration:	>0.05 µg/µL as determined by microplate BCA method
Labeling Method:	Labeled with [U- ¹³ C ₆ , ¹⁵ N ₄]-L-Arginine and [U- ¹³ C ₆ , ¹⁵ N ₂]-L-Lysine
Buffer:	25 mM Tris-HCl, 100 mM glycine, pH 7.3
Storage:	Store at -80°C. Avoid repeated freeze-thaw cycles.
Stability:	Stable for 3 months from receipt of products under proper storage and handling conditions.
RefSeq:	<u>NP_001670</u>
RefSeq Size:	1853
RefSeq ORF:	837
Synonyms:	ATPB-3; CD298
Locus ID:	483
UniProt ID:	<u>P54709</u>



[View online »](#)

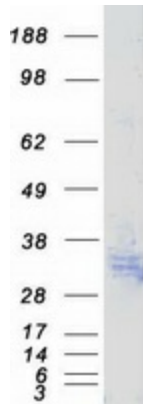
Cytogenetics: 3q23

Summary: The protein encoded by this gene belongs to the family of Na⁺/K⁺ and H⁺/K⁺ ATPases beta chain proteins, and to the subfamily of Na⁺/K⁺ -ATPases. Na⁺/K⁺ -ATPase is an integral membrane protein responsible for establishing and maintaining the electrochemical gradients of Na and K ions across the plasma membrane. These gradients are essential for osmoregulation, for sodium-coupled transport of a variety of organic and inorganic molecules, and for electrical excitability of nerve and muscle. This enzyme is composed of two subunits, a large catalytic subunit (alpha) and a smaller glycoprotein subunit (beta). The beta subunit regulates, through assembly of alpha/beta heterodimers, the number of sodium pumps transported to the plasma membrane. The glycoprotein subunit of Na⁺/K⁺ -ATPase is encoded by multiple genes. This gene encodes a beta 3 subunit. This gene encodes a beta 3 subunit. A pseudogene exists for this gene, and it is located on chromosome 2. [provided by RefSeq, Jul 2008]

Protein Families: Transmembrane

Protein Pathways: Cardiac muscle contraction

Product images:



Coomassie blue staining of purified ATP1B3 protein (Cat# [TP304183]). The protein was produced from HEK293T cells transfected with ATP1B3 cDNA clone (Cat# [RC204183]) using MegaTran 2.0 (Cat# [TT210002]).