

Product datasheet for PH304175

Hephaestin (HEPH) (NM_014799) Human Mass Spec Standard

Product data:

Product Type:	Mass Spec Standards
Description:	HEPH MS Standard C13 and N15-labeled recombinant protein (NP_055614)
Species:	Human
Expression Host:	HEK293
Expression cDNA Clone or AA Sequence:	RC204175
Predicted MW:	130.4 kDa
Protein Sequence:	>RC204175 protein sequence Red=Cloning site Green=Tags(s)

MESGHLWALLFMQSLWPQLTDGATRVYYLGIRDVQWNYAPKGRNVITNQPLDSDIVASSFLKSDKNRIG
 GTYKKTIIKEYKDDSYTDEVAQPAWLGFLGPVLQAEVGDVIL IHLKNFATRPYTIHPHG VFYEK DSEGS
 YPDGSSGPLKADDSVPPGGSHIYNWTIPEGHAPTADPACLTWIYHSHVDAPRDIATGLIGPLITCKRGA
 LDGNSPPQRQDQVDHDFLLFSVVDENLSWHLNENIATYCSDPASVDKEDETFQESNRMHAINGFVFNLP
 ELNMCQKRVAVHLFGMGNEIDVHTAFFHGQMLTTRGHHTDVANIFPATFVTAEMVPWEPGTWLISCQVN
 SHFRDGMQALYKVKSCSMAPPVDLLTGKVRQYFIEAHEIQWDYGPMDGSGTGKNLREPGISDKFFQKS
 SSRIGGTYYKVRVEAFQDETFQEKMHLEEDRHLGILGPVIRAEVGDITQVVVFYNRASQPFMOPHG VFYE
 KDYEGTVYNDGSSYPGLVAKPFKVTYRWTVPPHAGPTAQDPACLTWMYFSAADPIRDTNSGLVGPLLVC
 RAGALGADGKQKGVDFEFLFTVLDENKSWYNSANQAAAMLDLDFRLLSEDI EGFQDSNRMHAINGFLFSN
 LPRLDMCKGDTVAWHLGLGETDVGVMFQGNVQLQGMKGAAMLFPHTFVMAIMQPNLGTFEIYCYCQ
 AGSHREAGMRAIYNVSQCPGHQATPRQRYQAARIYYIMAEVEVDYCPDRSWEWHNQSEKDSYGYIFL
 SNKDGLLGSRYKKA VFREYTDGTFRI PRPRTGPEEHLGILGPLIKGEVGDILT VVFKNNASRPYSVHAHG
 VLESTTVWPLAAEPGEVVTYQWNIPERSGPGPNDACVSWIYYSAVDPIKDMYSGLVGPLAICQKGI LEP
 HGGRSMDREFALLFLIFDENKSWYLEENVATHGSQDPSINLQDETFLESNMHAINGKLYANLRGLTM
 YQGERVAWYMLAMQDQVDLHTIHFHAESFLYRNGENYRADVVDLFPGTFEVVMVASNPGTWMHCHVTD
 HVHAGMETLFTVFSRTEHLSPLTVITKETEKA VPPRDI EEGNVKMLGMQIPIKNVEMLASVLVAISVTL
 LVVLA LGGVVWYQHRQRKLRNRRSILDDSFKLLSFQK

TRTRPLEQKLISEEDLAANDILDYKDDDDKV

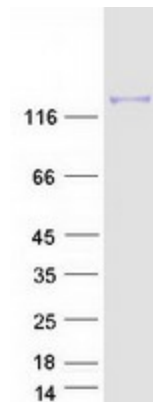
Tag:	C-Myc/DDK
Purity:	> 80% as determined by SDS-PAGE and Coomassie blue staining
Concentration:	>0.05 µg/µL as determined by microplate BCA method
Labeling Method:	Labeled with [U- ¹³ C ₆ , ¹⁵ N ₄]-L-Arginine and [U- ¹³ C ₆ , ¹⁵ N ₂]-L-Lysine
Buffer:	25 mM Tris-HCl, 100 mM glycine, pH 7.3



[View online >](#)

Storage:	Store at -80°C. Avoid repeated freeze-thaw cycles.
Stability:	Stable for 3 months from receipt of products under proper storage and handling conditions.
RefSeq:	NP_055614
RefSeq Size:	4284
RefSeq ORF:	3477
Synonyms:	CPL
Locus ID:	9843
UniProt ID:	Q9BQS7
Cytogenetics:	Xq12
Summary:	This gene encodes a member of the multicopper oxidase protein family. The encoded protein is involved in the transport of dietary iron from epithelial cells of the intestinal lumen into the circulatory system, and may be involved in copper transport and homeostasis. In mouse, defects in this gene can lead to severe microcytic anemia. Alternative splicing results in multiple transcript variants. [provided by RefSeq, Aug 2013]
Protein Families:	Druggable Genome, Transmembrane

Product images:



Coomassie blue staining of purified HEPH protein (Cat# [TP304175]). The protein was produced from HEK293T cells transfected with HEPH cDNA clone (Cat# [RC204175]) using MegaTran 2.0 (Cat# [TT210002]).