

Product datasheet for PH304158

PP1C gamma (PPP1CC) (NM_002710) Human Mass Spec Standard

Product data:

Product Type:	Mass Spec Standards
Description:	PPP1CC MS Standard C13 and N15-labeled recombinant protein (NP_002701)
Species:	Human
Expression Host:	HEK293
Expression cDNA Clone or AA Sequence:	RC204158
Predicted MW:	37 kDa
Protein Sequence:	>RC204158 protein sequence Red=Cloning site Green=Tags(s) MADLDKLNIDSIIQRLLEVRGSKPGKNVQLQENEIRGLCLKSREIFLSQPILLELEAPLKICGDIHGQYY DLLRRLFYGGFPPESNYLF LGDYVDRGKQSLETICLLLAYKIKYPENFFLLRGNHECASINRIYGFYDEC KRRYNIKLWKTFTDCFNCLPIAAIVDEKIFCCHGGLSPDQSMEQIRRIIMRPTDVPDQGLLCDLLWSDPD KDVLGWGENDRGVSFTFGAEVVAKFLHKHDLICRAHQVVEDGYEFFAKRQLVTLFSAPNYCGEFDNAG AMMSVDETLMCSFQILKPAEKKKPNATRPVTPPRGMITKQAKK TRTRPLEQKLI SEEDLAANDILDYKDDDDKV
Tag:	C-Myc/DDK
Purity:	> 80% as determined by SDS-PAGE and Coomassie blue staining
Concentration:	>0.05 µg/µL as determined by microplate BCA method
Labeling Method:	Labeled with [U- ¹³ C ₆ , ¹⁵ N ₄]-L-Arginine and [U- ¹³ C ₆ , ¹⁵ N ₂]-L-Lysine
Buffer:	25 mM Tris-HCl, 100 mM glycine, pH 7.3
Storage:	Store at -80°C. Avoid repeated freeze-thaw cycles.
Stability:	Stable for 3 months from receipt of products under proper storage and handling conditions.
RefSeq:	NP_002701
RefSeq Size:	2526
RefSeq ORF:	969
Synonyms:	PP-1G; PP1C; PPP1G
Locus ID:	5501



[View online »](#)

UniProt ID: [P36873](#), [A0A024RBP2](#)

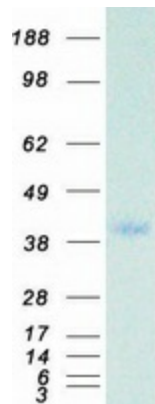
Cytogenetics: 12q24.11

Summary: The protein encoded by this gene belongs to the protein phosphatase family, PP1 subfamily. PP1 is an ubiquitous serine/threonine phosphatase that regulates many cellular processes, including cell division. It is expressed in mammalian cells as three closely related isoforms, alpha, beta/delta and gamma, which have distinct localization patterns. This gene encodes the gamma isozyme. Alternatively spliced transcript variants encoding different isoforms have been found for this gene. [provided by RefSeq, Oct 2011]

Protein Families: Druggable Genome, Phosphatase

Protein Pathways: Focal adhesion, Insulin signaling pathway, Long-term potentiation, Oocyte meiosis, Regulation of actin cytoskeleton, Vascular smooth muscle contraction

Product images:



Coomassie blue staining of purified PPP1CC protein (Cat# [TP304158]). The protein was produced from HEK293T cells transfected with PPP1CC cDNA clone (Cat# [RC204158]) using MegaTran 2.0 (Cat# [TT210002]).