

## Product datasheet for PH304135

### EB3 (MAPRE3) (NM\_012326) Human Mass Spec Standard

#### Product data:

Product Type:	Mass Spec Standards
Description:	MAPRE3 MS Standard C13 and N15-labeled recombinant protein (NP_036458)
Species:	Human
Expression Host:	HEK293
Expression cDNA Clone or AA Sequence:	RC204135
Predicted MW:	32 kDa
Protein Sequence:	>RC204135 protein sequence Red=Cloning site Green=Tags(s)

MAVNVYSTSVTSENLSRHDLAWVNSLHLNYTKIEQLCSGAAYCQFMDMLFPGCVHLRKVKFQAKLEHE  
YIHNFKVLQAAFKKMGVDKIIPVEKLVKGGKQDNFEFIQWFKKFFDANYDGKDYNPLLARQQDVAPPPN  
PGDQIFNKSKKLIQTAVPQRTSPTGPKNMQTSGRLSNVAPPCILRKNPPSARNGGHETDAQILELNQQLV  
DLKLTVDGLEKERDFYFSKLRDIELICQEHESENSPVISGIIIGILYATEEGFAPPEDDEIEEHQQEDQDE  
Y

TRTRPLEQKLISEEDLAANDILDYKDDDDKV

Tag:	C-Myc/DDK
Purity:	> 80% as determined by SDS-PAGE and Coomassie blue staining
Concentration:	>0.05 µg/µL as determined by microplate BCA method
Labeling Method:	Labeled with [U- <sup>13</sup> C <sub>6</sub> , <sup>15</sup> N <sub>4</sub> ]-L-Arginine and [U- <sup>13</sup> C <sub>6</sub> , <sup>15</sup> N <sub>2</sub> ]-L-Lysine
Buffer:	25 mM Tris-HCl, 100 mM glycine, pH 7.3
Storage:	Store at -80°C. Avoid repeated freeze-thaw cycles.
Stability:	Stable for 3 months from receipt of products under proper storage and handling conditions.
RefSeq:	<a href="#">NP_036458</a>
RefSeq Size:	1880
RefSeq ORF:	843
Synonyms:	EB3; EBF3; EBF3-S; RP3
Locus ID:	22924



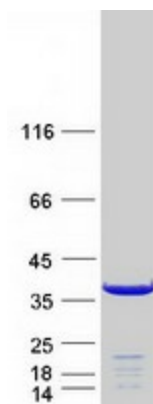
[View online »](#)

UniProt ID: [Q9UPY8](#)

Cytogenetics: 2p23.3

Summary: The protein encoded by this gene is a member of the RP/EB family of genes. The protein localizes to the cytoplasmic microtubule network and binds APCL, a homolog of the adenomatous polyposis coli tumor suppressor gene. [provided by RefSeq, Jul 2008]

### Product images:



Coomassie blue staining of purified MAPRE3 protein (Cat# [TP304135]). The protein was produced from HEK293T cells transfected with MAPRE3 cDNA clone (Cat# [RC204135]) using MegaTran 2.0 (Cat# [TT210002]).