

Product datasheet for PH304114

NLE1 (NM_018096) Human Mass Spec Standard

Product data:

Product Type:	Mass Spec Standards
Description:	NLE1 MS Standard C13 and N15-labeled recombinant protein (NP_060566)
Species:	Human
Expression Host:	HEK293
Expression cDNA Clone or AA Sequence:	RC204114
Predicted MW:	53.3 kDa
Protein Sequence:	>RC204114 protein sequence Red=Cloning site Green=Tags(s)

MAAAVADEAVARDVQRLLVQFQDEGGQLLGSPFDVPVDITPDRLQLVCNALLAQEDPLPLAFFVHDAEIV
SSLGKTLSEQAVETEKVLDIIYQPQAIIFRVRAVTRCTSSLEGHSEAVISVAFSPTGKYLASGSGDTTVRF
WDLSTETPHFTCKGHRHWLISISWSPDGKKLASGCKNGQILLWDPSTGKQVGRTLAGHSKWITGLSWEPL
HANPECRYVASSKDGSVRIWDTTAGRCERILTGHTQSVTCLRWGGDGLLYSASQDRTIKVWRAHDGVLC
RTLQGHGHWNTMALSTDYALRTGAFEPAEASVNPQDLQGSLQELKERALSRYNLVRGQGPRLVSGSDD
FTLFLWSPAEDKKPLTRMTGHQALINQVLFSPDSRIVASASFDKSIKLWDGRTGKYLASLRGHVAAVYQI
AWSADSRLLVSGSDSTLKVWDVKAQKLAMDLPGHADEVYAVDWSPDGQRVASGGKDKCLRIWRR

TRTRPLEQKLISEEDLAANDILDYKDDDDKV

Tag:	C-Myc/DDK
Purity:	> 80% as determined by SDS-PAGE and Coomassie blue staining
Concentration:	>0.05 µg/µL as determined by microplate BCA method
Labeling Method:	Labeled with [U- ¹³ C ₆ , ¹⁵ N ₄]-L-Arginine and [U- ¹³ C ₆ , ¹⁵ N ₂]-L-Lysine
Buffer:	25 mM Tris-HCl, 100 mM glycine, pH 7.3
Storage:	Store at -80°C. Avoid repeated freeze-thaw cycles.
Stability:	Stable for 3 months from receipt of products under proper storage and handling conditions.
RefSeq:	<u>NP_060566</u>
RefSeq Size:	2627
RefSeq ORF:	1455
Synonyms:	NLE



[View online »](#)

Locus ID: 54475

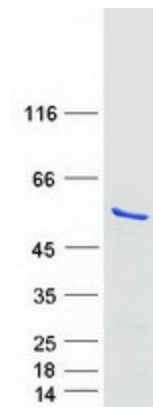
UniProt ID: [Q9NVX2](#)

Cytogenetics: 17q12

Summary: Plays a role in regulating Notch activity. Plays a role in regulating the expression of CDKN1A and several members of the Wnt pathway, probably via its effects on Notch activity. Required during embryogenesis for inner mass cell survival (By similarity).[UniProtKB/Swiss-Prot Function]

Protein Families: Druggable Genome, Stem cell - Pluripotency

Product images:



Coomassie blue staining of purified NLE1 protein (Cat# [TP304114]). The protein was produced from HEK293T cells transfected with NLE1 cDNA clone (Cat# [RC204114]) using MegaTran 2.0 (Cat# [TT210002]).