

Product datasheet for PH304113

RNMTL1 (MRM3) (NM_018146) Human Mass Spec Standard

Product data:

Product Type:	Mass Spec Standards
Description:	RNMTL1 MS Standard C13 and N15-labeled recombinant protein (NP_060616)
Species:	Human
Expression Host:	HEK293
Expression cDNA Clone or AA Sequence:	RC204113
Predicted MW:	47 kDa
Protein Sequence:	>RC204113 protein sequence Red=Cloning site Green=Tags(s)

MAALVRPSRFVVRPLLQVVQAWDL DARRWVRALRRSPVKVVFPSGEVVEQKRAPGKQPRKAPSEASAQEQ
REKQPLEESASRAPSTWEE SGLRYDKAYPGDRRLSSVMTIVKSRPFREKQKILLEGRR LISDALKAGAV
PKMFFFSRLEYLKE LPVDKLGVS LIKVKFEDIKDWSDLVTPQGIMGIFAKPDHVKMTYPKTQLQHSLPL
LLICDNL RDPGNLGTILRSAAGAGCSKVLLTKGCYDAWEPKVL RAGMGAHFRMPIINNLEWETVPNYLPP
DTRVYVADNCGLYAQAEMS NKASDHGWCDQRVMK FHKYEEEEEDVETGASQDWLPHVEVQSYSDSWTEAP
AAVVIGGETYGVSL ESLQLAESTGGKRLLIPVVPGVDSLNSAMAASILLFEGKQRLRGAEDLSRDRSYH

TRTRPLEQKLI SEEDLAANDILDYKDDDDKV

Tag:	C-Myc/DDK
Purity:	> 80% as determined by SDS-PAGE and Coomassie blue staining
Concentration:	>0.05 µg/µL as determined by microplate BCA method
Labeling Method:	Labeled with [U- ¹³ C ₆ , ¹⁵ N ₄]-L-Arginine and [U- ¹³ C ₆ , ¹⁵ N ₂]-L-Lysine
Buffer:	25 mM Tris-HCl, 100 mM glycine, pH 7.3
Storage:	Store at -80°C. Avoid repeated freeze-thaw cycles.
Stability:	Stable for 3 months from receipt of products under proper storage and handling conditions.
RefSeq:	<u>NP_060616</u>
RefSeq Size:	1815
RefSeq ORF:	1260
Synonyms:	RMTL1; RNMTL1
Locus ID:	55178



[View online »](#)

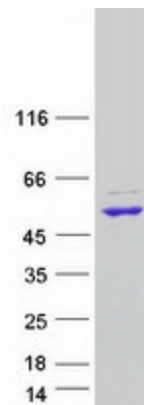
UniProt ID: [Q9HC36](#)

Cytogenetics: 17p13.3

Summary: Efficient translation of mitochondrial-derived transcripts requires proper assembly of the large subunit of the mitochondrial ribosome. Central to the biogenesis of this large subunit is the A-loop of mitochondrial 16S rRNA, which is modified by three rRNA methyltransferases located near mtDNA nucleoids. The protein encoded by this gene methylates G(1370) of 16S rRNA, and this modification is necessary for proper ribosomal large subunit assembly. Two transcript variants encoding different isoforms have been found for this gene. [provided by RefSeq, Dec 2015]

Protein Families: Stem cell - Pluripotency

Product images:



Coomassie blue staining of purified MRM3 protein (Cat# [TP304113]). The protein was produced from HEK293T cells transfected with MRM3 cDNA clone (Cat# [RC204113]) using MegaTran 2.0 (Cat# [TT210002]).