

Product datasheet for PH304112

TEM8 (ANTXR1) (NM_018153) Human Mass Spec Standard

Product data:

Product Type:	Mass Spec Standards
Description:	ANTXR1 MS Standard C13 and N15-labeled recombinant protein (NP_060623)
Species:	Human
Expression Host:	HEK293
Expression cDNA Clone or AA Sequence:	RC204112
Predicted MW:	37.1 kDa
Protein Sequence:	>RC204112 protein sequence Red =Cloning site Green =Tags(s) MATAERRALGIGFQWLSLATLVLICAGQGRRREDGGPACYGGFDLYFILDKSGSVLHHWNEIYYFVEQLA HKFISPLRMSFIVFSTRGTTLMKLTEDREQIRQGLEELQKVLPGDGYMHEGFERASEQIYYENRQGYR TASVIIALTDGELHEDLFFYSEREANRSRDLGAIYVCVGVKDFNETQLARIADSKDHVFPVNDGFQALQG IIHSILKKSCIEILAAEPSTICAGESFQVVVRNGFRHARNVDRVLCSEKINDSVTLNEKPFVSDTYLL CPAPILKEVGMKAALQVSMNDGLSFISSVIITTTTHCSLHKIASGPTAACME TRTRPLEQKLISEEDLAANDILDYKDDDDKV
Tag:	C-Myc/DDK
Purity:	> 80% as determined by SDS-PAGE and Coomassie blue staining
Concentration:	>0.05 µg/µL as determined by microplate BCA method
Labeling Method:	Labeled with [U- ¹³ C ₆ , ¹⁵ N ₄]-L-Arginine and [U- ¹³ C ₆ , ¹⁵ N ₂]-L-Lysine
Buffer:	25 mM Tris-HCl, 100 mM glycine, pH 7.3
Storage:	Store at -80°C. Avoid repeated freeze-thaw cycles.
Stability:	Stable for 3 months from receipt of products under proper storage and handling conditions.
RefSeq:	NP_060623
RefSeq Size:	2360
RefSeq ORF:	999
Synonyms:	ATR; GAPO; TEM8
Locus ID:	84168



[View online »](#)

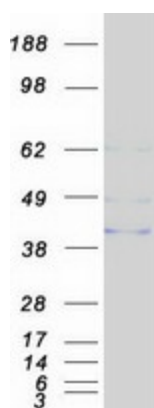
UniProt ID: [Q9H6X2](#), [Q96EC6](#)

Cytogenetics: 2p13.3

Summary: This gene encodes a type I transmembrane protein and is a tumor-specific endothelial marker that has been implicated in colorectal cancer. The encoded protein has been shown to also be a docking protein or receptor for Bacillus anthracis toxin, the causative agent of the disease, anthrax. The binding of the protective antigen (PA) component, of the tripartite anthrax toxin, to this receptor protein mediates delivery of toxin components to the cytosol of cells. Once inside the cell, the other two components of anthrax toxin, edema factor (EF) and lethal factor (LF) disrupt normal cellular processes. Three alternatively spliced variants that encode different protein isoforms have been described. [provided by RefSeq, Oct 2008]

Protein Families: Druggable Genome, Transmembrane

Product images:



Coomassie blue staining of purified ANTXR1 protein (Cat# [TP304112]). The protein was produced from HEK293T cells transfected with ANTXR1 cDNA clone (Cat# [RC204112]) using MegaTran 2.0 (Cat# [TT210002]).