

Product datasheet for PH304109

FBXL8 (NM_018378) Human Mass Spec Standard

Product data:

Product Type:	Mass Spec Standards
Description:	FBXL8 MS Standard C13 and N15-labeled recombinant protein (NP_060848)
Species:	Human
Expression Host:	HEK293
Expression cDNA Clone or AA Sequence:	RC204109
Predicted MW:	40.5 kDa
Protein Sequence:	>RC204109 protein sequence Red=Cloning site Green=Tags(s)

MAEPGEGLPEEVLALIFRHLSLRDRAAAARVCRAWAAAATCSAVWHDTKISCECELEGMLPPYLSACLDH
IHNLRLEFEPSPKPSRRAAIELLMVLAGRAPGLRGLRLECRGKPLFDAGRDLVLEAVHAVCGAASQLRHL
DLRRLSFTLDDALVLQAARSCPELHSLFLDNSTLVGSGVPGSVLELLEACPRLRALGLHLASLSHAILEA
LAAPDRAPFALLALRCACPEDARASPLPNEAWVALRRRHPLGLAVELELEPALPAESVTRVLQPAVPVAAL
RLNLSGDTVGPVRFAAHYYAATLCALEVRAAASAELEAARCAALREVHCFVSVSHSVLDAFRAH
CPRLRTYTLKLTREPHPWRPTLVA

TRTRPLEQKLISEEDLAANDILDYKDDDDKV

Tag:	C-Myc/DDK
Purity:	> 80% as determined by SDS-PAGE and Coomassie blue staining
Concentration:	>0.05 µg/µL as determined by microplate BCA method
Labeling Method:	Labeled with [U- ¹³ C ₆ , ¹⁵ N ₄]-L-Arginine and [U- ¹³ C ₆ , ¹⁵ N ₂]-L-Lysine
Buffer:	25 mM Tris-HCl, 100 mM glycine, pH 7.3
Storage:	Store at -80°C. Avoid repeated freeze-thaw cycles.
Stability:	Stable for 3 months from receipt of products under proper storage and handling conditions.
RefSeq:	<u>NP_060848</u>
RefSeq Size:	1618
RefSeq ORF:	1122
Synonyms:	FBL8
Locus ID:	55336



[View online »](#)

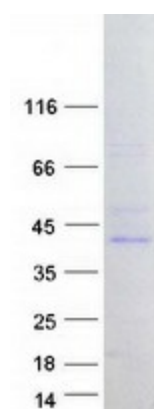
UniProt ID: [Q96CD0](#)

Cytogenetics: 16q22.1

Summary: This gene encodes a member of the F-box protein family which is characterized by an approximately 40 amino acid motif, the F-box. The F-box proteins constitute one of the four subunits of the ubiquitin protein ligase complex called SCFs (SKP1-cullin-F-box), which function in phosphorylation-dependent ubiquitination. The F-box proteins are divided into 3 classes: Fbws containing WD-40 domains, Fbls containing leucine-rich repeats, and Fbxs containing either different protein-protein interaction modules or no recognizable motifs. The protein encoded by this gene belongs to the Fbls class. It shares 78% sequence identity with the mouse protein. [provided by RefSeq, Jul 2008]

Protein Families: Druggable Genome

Product images:



Coomassie blue staining of purified FBXL8 protein (Cat# [TP304109]). The protein was produced from HEK293T cells transfected with FBXL8 cDNA clone (Cat# [RC204109]) using MegaTran 2.0 (Cat# [TT210002]).