

Product datasheet for PH304103

PACSIN3 (NM_016223) Human Mass Spec Standard

Product data:

Product Type:	Mass Spec Standards
Description:	PACSIN3 MS Standard C13 and N15-labeled recombinant protein (NP_057307)
Species:	Human
Expression Host:	HEK293
Expression cDNA Clone or AA Sequence:	RC204103
Predicted MW:	48.5 kDa
Protein Sequence:	>RC204103 protein sequence Red=Cloning site Green=Tags(s)

MAPEEDAGGEALGGSFWEAGNYRRTVQRVEDGHRLCGDLVSCFQERARIEKAYAQQADWARKWRGTVEK
GPQYGTLEKAWHAFFTAERLSALHLEVREKLQGQDSERVRAWQRGAFHRPVLGGFRESRAAEDGFRKAQ
KPWLKRLKEVEASKKSYHAARKDEKTAQTRESHAKADSAYSQEQLRKLQERVERCAKEAEKTKAQYEQTL
AELHRYTPRYMEDMEQAFETCQAAERQRLFFKDMLLTLHQHLDLSSSEKFHELHRDLHQGIEAASDEED
LRWWRSTHGPGMAMNWPQFEWSLDTQRTISRKEKGGSPDEVTLTSIVPTRDGTAPPPQSPGSPGTGQD
EEWSDEESPRKAATGVRVRALYDYAGQEDEL SFRAGEELLKMSEEDQGCQGLQSGRIGLYPANYVE
CVGA

TRTRPLEQKLI SEEDLAANDILDYKDDDDKV

Tag:	C-Myc/DDK
Purity:	> 80% as determined by SDS-PAGE and Coomassie blue staining
Concentration:	>0.05 µg/µL as determined by microplate BCA method
Labeling Method:	Labeled with [U- ¹³ C ₆ , ¹⁵ N ₄]-L-Arginine and [U- ¹³ C ₆ , ¹⁵ N ₂]-L-Lysine
Buffer:	25 mM Tris-HCl, 100 mM glycine, pH 7.3
Storage:	Store at -80°C. Avoid repeated freeze-thaw cycles.
Stability:	Stable for 3 months from receipt of products under proper storage and handling conditions.
RefSeq:	<u>NP_057307</u>
RefSeq Size:	1917
RefSeq ORF:	1272
Synonyms:	SDPIII



[View online »](#)

Locus ID: 29763

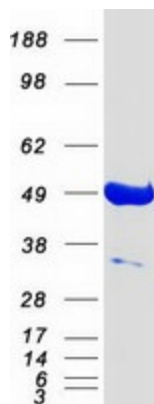
UniProt ID: [Q9UKS6](#)

Cytogenetics: 11p11.2

Summary: This gene is a member of the protein kinase C and casein kinase substrate in neurons family. The encoded protein is involved in linking the actin cytoskeleton with vesicle formation. Alternative splicing results in multiple transcript variants. [provided by RefSeq, May 2010]

Protein Families: Druggable Genome

Product images:



Coomassie blue staining of purified PACSIN3 protein (Cat# [TP304103]). The protein was produced from HEK293T cells transfected with PACSIN3 cDNA clone (Cat# [RC204103]) using MegaTran 2.0 (Cat# [TT210002]).