

Product datasheet for PH304101

SGK2 (NM_170693) Human Mass Spec Standard

Product data:

Product Type:	Mass Spec Standards
Description:	SGK2 MS Standard C13 and N15-labeled recombinant protein (NP_733794)
Species:	Human
Expression Host:	HEK293
Expression cDNA Clone or AA Sequence:	RC204101
Predicted MW:	41.2 kDa
Protein Sequence:	>RC204101 protein sequence Red=Cloning site Green=Tags(s)
	MNSSPAGTSPQPSTRANGNINLGPSANPNAQPTDFDLKVIKGNYGKVLAKRKSDFYAVKVLQKKS ILKKKEQSHIMAERSVLLKNVRHPFLVGLRYSFQTPEKLYFVLDYVNGGELFFHLQRERRFLEPRARFYA AEVASAIGYLHSLNIIYRDLKPENILLDCQGHVVL TDFGLCKEGVEPEDTTSTFCGTPEYLAPEVLRKEP YDRAVDWWCLGAVLYEMLHGLPPFYSQDVSQMYENILHQPLQIPGGRTVAACDLLQSLHLKQQRQLGSK ADFLEIKNHVFFSPINWDDL YHKRLTPFPNPVTPADLKHFDPEFTQEAVSKSIGCTPDTVASSSGASS AFLGFSYAPEDDDILDC
	TRTRPLEQKLI SEEDLAANDILDYKDDDDKV
Tag:	C-Myc/DDK
Purity:	> 80% as determined by SDS-PAGE and Coomassie blue staining
Concentration:	>0.05 µg/µL as determined by microplate BCA method
Labeling Method:	Labeled with [U- ¹³ C ₆ , ¹⁵ N ₄]-L-Arginine and [U- ¹³ C ₆ , ¹⁵ N ₂]-L-Lysine
Buffer:	25 mM Tris-HCl, 100 mM glycine, pH 7.3
Storage:	Store at -80°C. Avoid repeated freeze-thaw cycles.
Stability:	Stable for 3 months from receipt of products under proper storage and handling conditions.
RefSeq:	NP_733794
RefSeq Size:	1913
RefSeq ORF:	1101
Synonyms:	dj138B7.2; H-SGK2
Locus ID:	10110



[View online »](#)

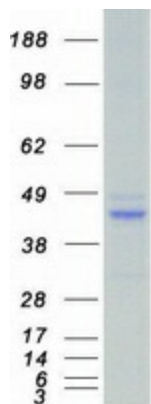
UniProt ID: [Q9HBY8](#)

Cytogenetics: 20q13.12

Summary: This gene encodes a serine/threonine protein kinase. Although this gene product is similar to serum- and glucocorticoid-induced protein kinase (SGK), this gene is not induced by serum or glucocorticoids. This gene is induced in response to signals that activate phosphatidylinositol 3-kinase, which is also true for SGK. Alternative splicing results in multiple transcript variants. [provided by RefSeq, Nov 2010]

Protein Families: Druggable Genome, Protein Kinase

Product images:



Coomassie blue staining of purified SGK2 protein (Cat# [TP304101]). The protein was produced from HEK293T cells transfected with SGK2 cDNA clone (Cat# [RC204101]) using MegaTran 2.0 (Cat# [TT210002]).