

## Product datasheet for PH304083

### SMOC1 (NM\_001034852) Human Mass Spec Standard

#### Product data:

Product Type:	Mass Spec Standards
Description:	SMOC1 MS Standard C13 and N15-labeled recombinant protein (NP_001030024)
Species:	Human
Expression Host:	HEK293
Expression cDNA Clone or AA Sequence:	RC204083
Predicted MW:	48.3 kDa
Protein Sequence:	>RC204083 protein sequence Red=Cloning site Green=Tags(s)

MLPARCARLLTPHLLLVLVQLSPARGHRTTGPRFLISDRDPQCNLHCSRTQPKPICASDGRSYESMCEYQ  
RAKCRDPTLGVVHRGRCKDAGQSKRLERAQALEQAKKPQEAQVPECGEDGSFTQVQCHTYTGYCWCVT  
PDGKPISGSSVQNKTPVCSGSVTDKPLSQGNSGRKDDGSKPTPTMETQPVFDGDEITAPTLWIKHLVIKD  
SKLNNTNIRNSEKVVYSCDQERQSALEEAQQNPREGIPIPECAPGGLYKPVQCHQSTGYCWCVLVDTGRPL  
PGTSTRYVMPSCESDARAKTTEADDPFKDRELPGCEPKKMEFITSLLDALTTDMVQAINSAAPTGGGRF  
SEPDPSTLEERVVHWYFSQLDSNSSNDINKREMKPFKRYVKKKAKPKKCARRFTDYCDLNKDKVISLPE  
LKGCLGVSKEVGRLV

TRTRPLEQKLISEEDLAANDILDYKDDDDKV

Tag:	C-Myc/DDK
Purity:	> 80% as determined by SDS-PAGE and Coomassie blue staining
Concentration:	>0.05 µg/µL as determined by microplate BCA method
Labeling Method:	Labeled with [U- <sup>13</sup> C <sub>6</sub> , <sup>15</sup> N <sub>4</sub> ]-L-Arginine and [U- <sup>13</sup> C <sub>6</sub> , <sup>15</sup> N <sub>2</sub> ]-L-Lysine
Buffer:	25 mM Tris-HCl, 100 mM glycine, pH 7.3
Storage:	Store at -80°C. Avoid repeated freeze-thaw cycles.
Stability:	Stable for 3 months from receipt of products under proper storage and handling conditions.
RefSeq:	<u>NP_001030024</u>
RefSeq Size:	3716
RefSeq ORF:	1305
Synonyms:	OAS



[View online »](#)

Locus ID: 64093

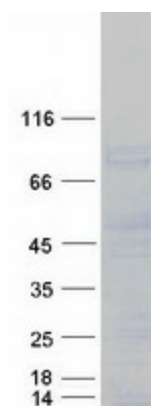
UniProt ID: [Q9H4F8](#)

Cytogenetics: 14q24.2

**Summary:** This gene encodes a multi-domain secreted protein that may have a critical role in ocular and limb development. Mutations in this gene are associated with microphthalmia and limb anomalies. Alternatively spliced transcript variants encoding different isoforms have been found for this gene. [provided by RefSeq, Mar 2011]

**Protein Families:** Secreted Protein

### Product images:



Coomassie blue staining of purified SMOC1 protein (Cat# [TP304083]). The protein was produced from HEK293T cells transfected with SMOC1 cDNA clone (Cat# [RC204083]) using MegaTran 2.0 (Cat# [TT210002]).