

## Product datasheet for PH304072

### alpha Tubulin (TUBA3C) (NM\_079836) Human Mass Spec Standard

#### Product data:

Product Type:	Mass Spec Standards
Description:	TUBA3C MS Standard C13 and N15-labeled recombinant protein (NP_524575)
Species:	Human
Expression Host:	HEK293
Expression cDNA Clone or AA Sequence:	RC204072
Predicted MW:	46.1 kDa
Protein Sequence:	>RC204072 protein sequence Red=Cloning site Green=Tags(s)
	MRECISIHVGQAGVQIGNACWELYLEHGIQPDGQMPDSTIGGGDDSFNTFFSETGAGKHVPRAVFVDL EPTVVDEVRTGTYRQLFHPEQLITGKEDAANNYARGHYTIGKEIVDLVLDRIKRLADLCTGLQGFLIFHS FGGGTGSGFASLLMERLSVDYGGKSKLEFAIYPAPQVSTAVVEPYNSILTTHTTLEHSDCAFMDNEAIY DICRRNLDIERPTYTNLNLIGQIVSSITASLRFDGALNVDLTFEQTNLVPYPRIHFPLATYAPVISA EK AYHEQLSVAEITNACFEPANQMVKCDPRHGKYMCCMLYRGDVVPKDVNAAIATIKTKRTIQFVDWCPTG FKVGINYQPPTVPPGGDLAKVQRAVCMLSNNTTAAEAWARLDLAALEKDYEEVGVDVSEAEAEEGEEY
	TRTRPLEQKLI SEEDLAANDILDYKDDDDKV
Tag:	C-Myc/DDK
Purity:	> 80% as determined by SDS-PAGE and Coomassie blue staining
Concentration:	>0.05 µg/µL as determined by microplate BCA method
Labeling Method:	Labeled with [U- <sup>13</sup> C <sub>6</sub> , <sup>15</sup> N <sub>4</sub> ]-L-Arginine and [U- <sup>13</sup> C <sub>6</sub> , <sup>15</sup> N <sub>2</sub> ]-L-Lysine
Buffer:	25 mM Tris-HCl, 100 mM glycine, pH 7.3
Storage:	Store at -80°C. Avoid repeated freeze-thaw cycles.
Stability:	Stable for 3 months from receipt of products under proper storage and handling conditions.
RefSeq:	<a href="#">NP_524575</a>
RefSeq Size:	1408
RefSeq ORF:	1254
Synonyms:	bA408E5.3; TUBA2; tubulin, alpha 2; tubulin, alpha 3c
Locus ID:	7278



[View online »](#)

UniProt ID: [Q13748](#)

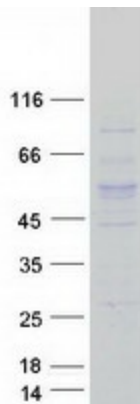
Cytogenetics: 13q12.11

**Summary:** Microtubules of the eukaryotic cytoskeleton perform essential and diverse functions and are composed of a heterodimer of alpha and beta tubulin. The genes encoding these microtubule constituents are part of the tubulin superfamily, which is composed of six distinct families. Genes from the alpha, beta and gamma tubulin families are found in all eukaryotes. The alpha and beta tubulins represent the major components of microtubules, while gamma tubulin plays a critical role in the nucleation of microtubule assembly. There are multiple alpha and beta tubulin genes and they are highly conserved among and between species. This gene is an alpha tubulin gene that encodes a protein 99% identical to the mouse testis-specific Tuba3 and Tuba7 gene products. This gene is located in the 13q11 region, which is associated with the genetic diseases Clouston hidrotic ectodermal dysplasia and Kabuki syndrome. [provided by RefSeq, Jul 2008]

**Protein Families:** Druggable Genome, Stem cell - Pluripotency

**Protein Pathways:** Gap junction, Pathogenic Escherichia coli infection

### Product images:



Coomassie blue staining of purified TUBA3C protein (Cat# [TP304072]). The protein was produced from HEK293T cells transfected with TUBA3C cDNA clone (Cat# [RC204072]) using MegaTran 2.0 (Cat# [TT210002]).