

Product datasheet for PH304055

COTL1 (NM_021149) Human Mass Spec Standard

Product data:

Product Type:	Mass Spec Standards
Description:	COTL1 MS Standard C13 and N15-labeled recombinant protein (NP_066972)
Species:	Human
Expression Host:	HEK293
Expression cDNA Clone or AA Sequence:	RC204055
Predicted MW:	15.9 kDa
Protein Sequence:	>RC204055 protein sequence Red=Cloning site Green=Tags(s) MATKIDKEACRAAYNLVRDDGSAVIWVTFKYDGSTIVPGEQGAEYQHFIQQCTDDVRLFVAFVRFITGDAM SKRSKFALITWIGENVSLQRAKTGTDKTLVKEVVQNFVISEDRKELEEDFIKSELKKAGGANYDAQ TE TRTRPLEQKLI SEEDLAANDILDYKDDDDKV
Tag:	C-Myc/DDK
Purity:	> 80% as determined by SDS-PAGE and Coomassie blue staining
Concentration:	>0.05 µg/µL as determined by microplate BCA method
Labeling Method:	Labeled with [U- 13C6, 15N4]-L-Arginine and [U- 13C6, 15N2]-L-Lysine
Buffer:	25 mM Tris-HCl, 100 mM glycine, pH 7.3
Storage:	Store at -80°C. Avoid repeated freeze-thaw cycles.
Stability:	Stable for 3 months from receipt of products under proper storage and handling conditions.
RefSeq:	<u>NP_066972</u>
RefSeq Size:	1893
RefSeq ORF:	426
Synonyms:	CLP
Locus ID:	23406
UniProt ID:	<u>Q14019</u> , <u>A0A384MTY2</u>

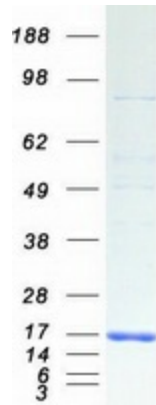


[View online »](#)

Cytogenetics: 16q24.1

Summary: This gene encodes one of the numerous actin-binding proteins which regulate the actin cytoskeleton. This protein binds F-actin, and also interacts with 5-lipoxygenase, which is the first committed enzyme in leukotriene biosynthesis. Although this gene has been reported to map to chromosome 17 in the Smith-Magenis syndrome region, the best alignments for this gene are to chromosome 16. The Smith-Magenis syndrome region is the site of two related pseudogenes. [provided by RefSeq, Jul 2008]

Product images:



Coomassie blue staining of purified COTL1 protein (Cat# [TP304055]). The protein was produced from HEK293T cells transfected with COTL1 cDNA clone (Cat# [RC204055]) using MegaTran 2.0 (Cat# [TT210002]).