

## Product datasheet for PH304052

### NASP (NM\_002482) Human Mass Spec Standard

#### Product data:

Product Type:	Mass Spec Standards
Description:	NASP MS Standard C13 and N15-labeled recombinant protein (NP_002473)
Species:	Human
Expression Host:	HEK293
Expression cDNA Clone or AA Sequence:	RC204052
Predicted MW:	85.2 kDa
Protein Sequence:	>RC204052 protein sequence Red=Cloning site Green=Tags(s)

MAMESTATAAVALVSAADKIEDVPAPSTSADKVESLDVDSEAKKLLGLGQKHLVMGDIPAAVNAFQEAA  
SLLGKKYGETANECGEAFFFYGKSLLELARMENGLVGNALGEGVHVEEEEGEKTEDESLVENNDNIDEEAR  
EELREQVYDAMGEKEEAKKTEDKSLAKPETDKEQDSEMEKGGREDMDISKSAEEPQEKVDLTLDWLTETS  
EEAKGGAPEGPNEAEVTSKGPEQVPEAEEKSVSGTDVQEECREKGGQEKQGEVIVSIEEKPKVSEEE  
QPVVTTLEKQGTAVEVEAESLDPTVKPVDVGGDEPEEKVVTSENEAGKAVLEQLVGQEVPPAEESPEVTTE  
AAEASAVEAGSEVSEKPGQEPVLPKDGAVNGPSVVGDTPIEPQTSIERLTETKDGSGLEEKVRAKLVP  
SQEETKLSVEESEAAGDGVDTKVAQGATEKSPEDKVQIAANEETQEREEQMKEGEETEGSEEDDKENDKT  
EEMPNDVLENKSLQENEEEEIGNLELAWDMLDLAKIIFKRQETKEAQLYAAQHLKLGVEVSESENYVQ  
AVEEFQSCNLQEQYLEAHDRLLAETHYQLGLAYGYSQYDEAVAQFSKSIIEVIENRMAVLEQVKEAEG  
SSAEYKKEIEELKELLPEIREKIEDAKESQRSGNVAELALKATLVESSTSGFTPGGGGSSVSMIASRKPT  
DGASSNCVTDIISHLVRKKRKEEESPRKDDAKKAKQEPVNGGSGDAVPSGNEVSENMEEEEAENQAESR  
AAVEGTVEAGATVESTAC

TRTRPLEQKLISEEDLAANDILDYKDDDDKV

Tag:	C-Myc/DDK
Purity:	> 80% as determined by SDS-PAGE and Coomassie blue staining
Concentration:	>0.05 µg/µL as determined by microplate BCA method
Labeling Method:	Labeled with [U- <sup>13</sup> C <sub>6</sub> , <sup>15</sup> N <sub>4</sub> ]-L-Arginine and [U- <sup>13</sup> C <sub>6</sub> , <sup>15</sup> N <sub>2</sub> ]-L-Lysine
Buffer:	25 mM Tris-HCl, 100 mM glycine, pH 7.3
Storage:	Store at -80°C. Avoid repeated freeze-thaw cycles.
Stability:	Stable for 3 months from receipt of products under proper storage and handling conditions.
RefSeq:	<a href="#">NP_002473</a>

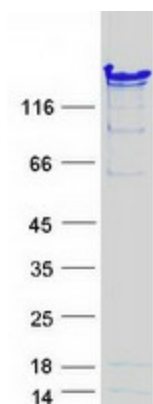


[View online »](#)

RefSeq Size:	3301
RefSeq ORF:	2364
Synonyms:	FLB7527; HMDRA1; PRO1999
Locus ID:	4678
UniProt ID:	<a href="#">P49321</a>
Cytogenetics:	1p34.1

**Summary:** This gene encodes a H1 histone binding protein that is involved in transporting histones into the nucleus of dividing cells. Multiple isoforms are encoded by transcript variants of this gene. The somatic form is expressed in all mitotic cells, is localized to the nucleus, and is coupled to the cell cycle. The testicular form is expressed in embryonic tissues, tumor cells, and the testis. In male germ cells, this protein is localized to the cytoplasm of primary spermatocytes, the nucleus of spermatids, and the periacrosomal region of mature spermatozoa. [provided by RefSeq, Jul 2008]

### Product images:



Coomassie blue staining of purified NASP protein (Cat# [TP304052]). The protein was produced from HEK293T cells transfected with NASP cDNA clone (Cat# [RC204052]) using MegaTran 2.0 (Cat# [TT210002]).