

## Product datasheet for PH304037

### TLE 1 (TLE1) (NM\_005077) Human Mass Spec Standard

#### Product data:

Product Type:	Mass Spec Standards
Description:	TLE1 MS Standard C13 and N15-labeled recombinant protein (NP_005068)
Species:	Human
Expression Host:	HEK293
Expression cDNA Clone or AA Sequence:	RC204037
Predicted MW:	83.2 kDa
Protein Sequence:	>RC204037 protein sequence Red=Cloning site Green=Tags(s)
	MFPQSRHPTPHQAAGQPFKFTIPESLDRIKEEFQFLQAQYHSLKLECEKLASEKTEMQRHYVMYYMSYG LNIEMHKQTEIAKRLNTICAQVIPFLSQEHQQQVAQAVERAKQVTMAELNAIGQQQLQAQHL SHGHGPP VPLTPHPSGLQPPGIPPLGGSAGLLALSSALSGQSHLAIKDDKKHDAEHHRDREPPTSNSLLVPDSLGR TDKRRNGPEFSNDIKKRKVDDKSSHYDSGDKSDDNLVVDVSNEDPSSPRASPAHSPRENGIDKNRLLK KDASSSPASTASSASSTLSKSKEMSLHEKASTPVLKSSTPTPRSDMPTPGTSATPGLRPGLGKPPAIDPL VNQAAAGLRTPLAVPGYPAPFGMVPHAGMNGELTSPGAAAYASLHNMSPQMSAAAAAAVVAYGRSPMVG FDPPPHMRVPTIPPNLGIPGGKPAYSFHVTADGQMPPVFPDPDALIGGIPRHARQINTLNHGVEVCAV TISNPTRHVYTGKGCVKVWDISHPGNKSPVSQLDCLNRDNYIRSKLLPDGCTLIVGGEASTLSIWDLA APTPRIKAELTSSAPACYALAI SPDSKVCFSCCSDGNI AVWDLHNQTLVRFQGHDTGASCIDISNDGTK LWTGGLDNTVRSWDLREGRQLQQHDFTSQIFSLGYCPTGEWLVGMESSNVEVLHVNKPKDYQLHLHESC VLSLKFAYCGKWFVSTGKDNLLNAWRTPYGASIFQSKESSVLSCDISVDDKYIVTGSDDKATVVEVIY
	TRTRPLEQKLISEEDLAANDILDYKDDDDKV
Tag:	C-Myc/DDK
Purity:	> 80% as determined by SDS-PAGE and Coomassie blue staining
Concentration:	>0.05 µg/µL as determined by microplate BCA method
Labeling Method:	Labeled with [U- <sup>13</sup> C <sub>6</sub> , <sup>15</sup> N <sub>4</sub> ]-L-Arginine and [U- <sup>13</sup> C <sub>6</sub> , <sup>15</sup> N <sub>2</sub> ]-L-Lysine
Buffer:	25 mM Tris-HCl, 100 mM glycine, pH 7.3
Storage:	Store at -80°C. Avoid repeated freeze-thaw cycles.
Stability:	Stable for 3 months from receipt of products under proper storage and handling conditions.
RefSeq:	<a href="#">NP_005068</a>



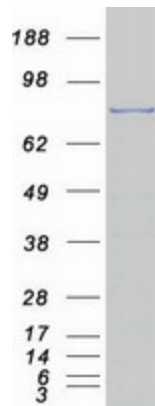
[View online »](#)

RefSeq Size: 3283  
RefSeq ORF: 2310  
Synonyms: ESG; ESG1; GRG1  
Locus ID: 7088  
UniProt ID: [Q04724](#), [Q59EF7](#)  
Cytogenetics: 9q21.32

**Summary:** Transcriptional corepressor that binds to a number of transcription factors. Inhibits NF-kappa-B-regulated gene expression. Inhibits the transcriptional activation mediated by FOXA2, and by CTNNB1 and TCF family members in Wnt signaling. The effects of full-length TLE family members may be modulated by association with dominant-negative AES. Unusual function as coactivator for ESRRG.[UniProtKB/Swiss-Prot Function]

**Protein Families:** Transcription Factors

### Product images:



Coomassie blue staining of purified TLE1 protein (Cat# [TP304037]). The protein was produced from HEK293T cells transfected with TLE1 cDNA clone (Cat# [RC204037]) using MegaTran 2.0 (Cat# [TT210002]).