

Product datasheet for PH304018

MAGEF1 (NM_022149) Human Mass Spec Standard

Product data:

Product Type:	Mass Spec Standards
Description:	MAGEF1 MS Standard C13 and N15-labeled recombinant protein (NP_071432)
Species:	Human
Expression Host:	HEK293
Expression cDNA Clone or AA Sequence:	RC204018
Predicted MW:	35.3 kDa
Protein Sequence:	>RC204018 protein sequence Red=Cloning site Green=Tags(s)

MLQTPESRGLPVPQAEGEKDGGHGETRAPTASQERPKEELGAGREEGAAEPALTRKGARALAAKSLARR
RAYRRLNRTVAELVQFLLVKDKKSPITRSEMVKYVIGDLKILFPDIIARAAEHLRYVFGFELKQFDRKH
HTYILINKLKPLEEEEEEDLGGDGPRLGLMMILGLIYMRGNSAREAQVWEMLRRLGVQPSKYHFLFGY
PKRLIMEDFVQQRYL SYRRVPHTNPPAYEF SWGPRSNLEISKMEVLGFVAKLHKKEPQHWPVQYREALAD
EADRARAKARAEASMRARASARAGIHLW

TRTRPLEQKLI SEEDLAANDILDYKDDDDKV

Tag:	C-Myc/DDK
Purity:	> 80% as determined by SDS-PAGE and Coomassie blue staining
Concentration:	>0.05 µg/µL as determined by microplate BCA method
Labeling Method:	Labeled with [U- ¹³ C ₆ , ¹⁵ N ₄]-L-Arginine and [U- ¹³ C ₆ , ¹⁵ N ₂]-L-Lysine
Buffer:	25 mM Tris-HCl, 100 mM glycine, pH 7.3
Storage:	Store at -80°C. Avoid repeated freeze-thaw cycles.
Stability:	Stable for 3 months from receipt of products under proper storage and handling conditions.
RefSeq:	NP_071432
RefSeq Size:	1700
RefSeq ORF:	924
Synonyms:	MAGE-F1
Locus ID:	64110



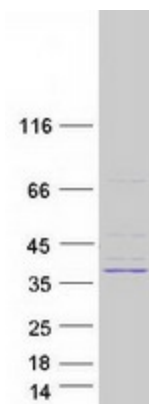
[View online »](#)

UniProt ID: [Q9HAY2](#)

Cytogenetics: 3q27.1

Summary: This intronless gene encodes a member of the MAGE superfamily. It is ubiquitously expressed in normal tissues and in tumor cells. This gene includes a microsatellite repeat in the coding region. [provided by RefSeq, Jul 2008]

Product images:



Coomassie blue staining of purified MAGEF1 protein (Cat# [TP304018]). The protein was produced from HEK293T cells transfected with MAGEF1 cDNA clone (Cat# [RC204018]) using MegaTran 2.0 (Cat# [TT210002]).