

## Product datasheet for PH304012

### PERP (NM\_022121) Human Mass Spec Standard

#### Product data:

Product Type:	Mass Spec Standards
Description:	PERP MS Standard C13 and N15-labeled recombinant protein (NP_071404)
Species:	Human
Expression Host:	HEK293
Expression cDNA Clone or AA Sequence:	RC204012
Predicted MW:	21.4 kDa
Protein Sequence:	>RC204012 protein sequence <b>Red</b> =Cloning site <b>Green</b> =Tags(s)  MIRCGLACERCRWILPLLLLSAIAFDIIALAGRWLQSSDHGQTSSLWVKCSQEGGSGSYEEGCQSLME YAWGRAAAAMLFCGFIIILVICFILSFFALCGPQMLVFLRVIGLLLAAVFAQIISLVIYPVKYTQTFTLH ANPAVTYIYNWAYGFGWAATIILIGCAFFFCCLPNYEDLLGNAKPRYFYTSA  <b>SGP</b> TRTRPLEQKLI <b>SEEDLAANDILDYKDDDDK</b> V
Tag:	C-Myc/DDK
Purity:	> 80% as determined by SDS-PAGE and Coomassie blue staining
Concentration:	>0.05 µg/µL as determined by microplate BCA method
Labeling Method:	Labeled with [U- <sup>13</sup> C <sub>6</sub> , <sup>15</sup> N <sub>4</sub> ]-L-Arginine and [U- <sup>13</sup> C <sub>6</sub> , <sup>15</sup> N <sub>2</sub> ]-L-Lysine
Buffer:	25 mM Tris-HCl, 100 mM glycine, pH 7.3
Storage:	Store at -80°C. Avoid repeated freeze-thaw cycles.
Stability:	Stable for 3 months from receipt of products under proper storage and handling conditions.
RefSeq:	<a href="#">NP_071404</a>
RefSeq Size:	4319
RefSeq ORF:	579
Synonyms:	dj496H19.1; KCP1; KRTCAP1; PIGPC1; THW
Locus ID:	64065
UniProt ID:	<a href="#">Q96FX8</a>



[View online »](#)

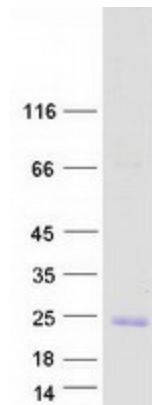
**Cytogenetics:** 6q23.3

**Summary:** Component of intercellular desmosome junctions. Plays a role in stratified epithelial integrity and cell-cell adhesion by promoting desmosome assembly. Plays a role as an effector in the TP53-dependent apoptotic pathway (By similarity).[UniProtKB/Swiss-Prot Function]

**Protein Families:** Druggable Genome, Transmembrane

**Protein Pathways:** p53 signaling pathway

**Product images:**



Coomassie blue staining of purified PERP protein (Cat# [TP304012]). The protein was produced from HEK293T cells transfected with PERP cDNA clone (Cat# [RC204012]) using MegaTran 2.0 (Cat# [TT210002]).