

Product datasheet for PH304006

RPL11 (NM_000975) Human Mass Spec Standard

Product data:

| | |
|---------------------------------------|--|
| Product Type: | Mass Spec Standards |
| Description: | RPL11 MS Standard C13 and N15-labeled recombinant protein (NP_000966) |
| Species: | Human |
| Expression Host: | HEK293 |
| Expression cDNA Clone or AA Sequence: | RC204006 |
| Predicted MW: | 20.1 kDa |
| Protein Sequence: | >RC204006 protein sequence Red=Cloning site Green=Tags(s) MADQGEKENPMRELRIKRLCLNICVGESGDRLTRAAKVLEQLTGQTPVFSKARYTVRSFGIRRNEKIAVH CTVRGAKAEEILEKGLKVREYELRKNFSDTGNFGFGIQEHIDLGIKYDPSIGIYGLDFYVVLGRPGFSI ADKKRRTCIGAKHRISKEEAMRWFQQKYDGIILPGK TRTRPLEQKLISEEDLAANDILDYKDDDDKV |
| Tag: | C-Myc/DDK |
| Purity: | > 80% as determined by SDS-PAGE and Coomassie blue staining |
| Concentration: | >0.05 µg/µL as determined by microplate BCA method |
| Labeling Method: | Labeled with [U- ¹³ C ₆ , ¹⁵ N ₄]-L-Arginine and [U- ¹³ C ₆ , ¹⁵ N ₂]-L-Lysine |
| Buffer: | 25 mM Tris-HCl, 100 mM glycine, pH 7.3 |
| Storage: | Store at -80°C. Avoid repeated freeze-thaw cycles. |
| Stability: | Stable for 3 months from receipt of products under proper storage and handling conditions. |
| RefSeq: | NP_000966 |
| RefSeq Size: | 644 |
| RefSeq ORF: | 534 |
| Synonyms: | DBA7; GIG34; L11; uL5 |
| Locus ID: | 6135 |
| UniProt ID: | P62913 , Q5VVD0 |



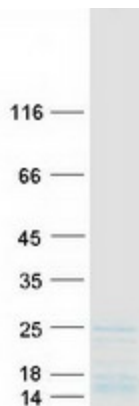
[View online »](#)

Cytogenetics: 1p36.11

Summary: Ribosomes, the organelles that catalyze protein synthesis, consist of a small 40S subunit and a large 60S subunit. Together these subunits are composed of 4 RNA species and approximately 80 structurally distinct proteins. This gene encodes a ribosomal protein that is a component of the 60S subunit. The protein belongs to the L5P family of ribosomal proteins. It is located in the cytoplasm. The protein probably associates with the 5S rRNA. Alternatively spliced transcript variants encoding different isoforms have been found for this gene. As is typical for genes encoding ribosomal proteins, there are multiple processed pseudogenes of this gene dispersed through the genome. [provided by RefSeq, Dec 2010]

Protein Pathways: Ribosome

Product images:



Coomassie blue staining of purified RPL11 protein (Cat# [TP304006]). The protein was produced from HEK293T cells transfected with RPL11 cDNA clone (Cat# [RC204006]) using MegaTran 2.0 (Cat# [TT210002]).