

Product datasheet for PH304002

TST (NM_003312) Human Mass Spec Standard

Product data:

Product Type:	Mass Spec Standards
Description:	TST MS Standard C13 and N15-labeled recombinant protein (NP_003303)
Species:	Human
Expression Host:	HEK293
Expression cDNA Clone or AA Sequence:	RC204002
Predicted MW:	33.4 kDa
Protein Sequence:	>RC204002 protein sequence Red=Cloning site Green=Tags(s) MVHQVLYRALVSTKWLAESIRTGKLGPLRVLDASWYSPGTREARKEYLERHVPASFFDIEECRDASP YEMMLPSEAGFAEYVGRGIGSNHHTVVVYDGEHLGSFYAPRVWMMFRVFGHRTVSVLNGGFRNWLKEGHP VTSEPSRPEPAVFKATLDRSLLKTYEQVLENLESKRFLQVDSRSQGRFLGTEPEPDAVGLDSGHIRGAVN MPFMDFLTEDGFEEKGPEELRALFQTKKVDLSQPLIATCRKGVTACHVALAAYLCGKPDVAVYDGSWSEWF RRAPPESRVSQKSEKA SGPTRTRPLEQKLI SEEDLAANDILDYKDDDDKV
Tag:	C-Myc/DDK
Purity:	> 80% as determined by SDS-PAGE and Coomassie blue staining
Concentration:	>0.05 µg/µL as determined by microplate BCA method
Labeling Method:	Labeled with [U- ¹³ C ₆ , ¹⁵ N ₄]-L-Arginine and [U- ¹³ C ₆ , ¹⁵ N ₂]-L-Lysine
Buffer:	25 mM Tris-HCl, 100 mM glycine, pH 7.3
Storage:	Store at -80°C. Avoid repeated freeze-thaw cycles.
Stability:	Stable for 3 months from receipt of products under proper storage and handling conditions.
RefSeq:	NP_003303
RefSeq Size:	1143
RefSeq ORF:	891
Synonyms:	RDS
Locus ID:	7263



[View online »](#)

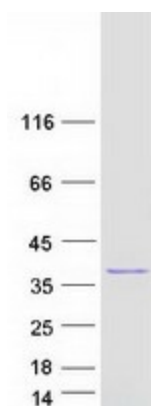
UniProt ID: [Q16762](#), [A0A384NKQ2](#)

Cytogenetics: 22q12.3

Summary: This is one of two neighboring genes encoding similar proteins that each contain two rhodanese domains. The encoded protein is localized to the mitochondria and catalyzes the conversion of thiosulfate and cyanide to thiocyanate and sulfite. In addition, the protein interacts with 5S ribosomal RNA and facilitates its import into the mitochondria. Alternative splicing results in multiple transcript variants. [provided by RefSeq, Jul 2012]

Protein Families: Druggable Genome

Product images:



Coomassie blue staining of purified TST protein (Cat# [TP304002]). The protein was produced from HEK293T cells transfected with TST cDNA clone (Cat# [RC204002]) using MegaTran 2.0 (Cat# [TT210002]).