

Product datasheet for **PH304000**

MRPS6 (NM_032476) Human Mass Spec Standard

Product data:

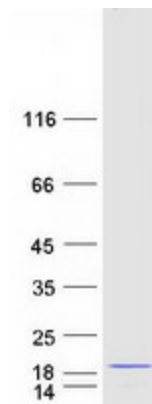
Product Type:	Mass Spec Standards
Description:	MRPS6 MS Standard C13 and N15-labeled recombinant protein (NP_115865)
Species:	Human
Expression Host:	HEK293
Expression cDNA Clone or AA Sequence:	RC204000
Predicted MW:	14.2 kDa
Protein Sequence:	>RC204000 protein sequence Red =Cloning site Green =Tags(s) MPRYELALILKAMQRPETAATLKRTIEALMDRGAIVRDLENLGERALPYRISAHSQQHNRGGYFLVDFYA PTAAVESMVEHLSRDIDVIRGNIVKHPLTQELKECEGIVPVPLAEKLYSTKRRKK TRTRPLEQKLISEEDLAANDILDYKDDDDKV
Tag:	C-Myc/DDK
Purity:	> 80% as determined by SDS-PAGE and Coomassie blue staining
Concentration:	>0.05 µg/µL as determined by microplate BCA method
Labeling Method:	Labeled with [U- 13C6, 15N4]-L-Arginine and [U- 13C6, 15N2]-L-Lysine
Buffer:	25 mM Tris-HCl, 100 mM glycine, pH 7.3
Storage:	Store at -80°C. Avoid repeated freeze-thaw cycles.
Stability:	Stable for 3 months from receipt of products under proper storage and handling conditions.
RefSeq:	NP_115865
RefSeq Size:	1017
RefSeq ORF:	375
Synonyms:	C21orf101; MRP-S6; RPMS6; S6mt
Locus ID:	64968
UniProt ID:	P82932
Cytogenetics:	21q22.11



[View online »](#)

Summary:

Mammalian mitochondrial ribosomal proteins are encoded by nuclear genes and help in protein synthesis within the mitochondrion. Mitochondrial ribosomes (mitoribosomes) consist of a small 28S subunit and a large 39S subunit. They have an estimated 75% protein to rRNA composition compared to prokaryotic ribosomes, where this ratio is reversed. Another difference between mammalian mitoribosomes and prokaryotic ribosomes is that the latter contain a 5S rRNA. Among different species, the proteins comprising the mitoribosome differ greatly in sequence, and sometimes in biochemical properties, which prevents easy recognition by sequence homology. This gene encodes a 28S subunit protein that belongs to the ribosomal protein S6P family. Pseudogenes corresponding to this gene are found on chromosomes 1p and 12q. [provided by RefSeq, Jul 2008]

Product images:

Coomassie blue staining of purified MRPS6 protein (Cat# [TP304000]). The protein was produced from HEK293T cells transfected with MRPS6 cDNA clone (Cat# [RC204000]) using MegaTran 2.0 (Cat# [TT210002]).