

Product datasheet for PH303990

RCN1 (NM_002901) Human Mass Spec Standard

Product data:

Product Type:	Mass Spec Standards
Description:	RCN1 MS Standard C13 and N15-labeled recombinant protein (NP_002892)
Species:	Human
Expression Host:	HEK293
Expression cDNA Clone or AA Sequence:	RC203990
Predicted MW:	38.9 kDa
Protein Sequence:	>RC203990 protein sequence Red =Cloning site Green =Tags(s)

MARGGRGRRLLGLALLLALVLAAPRVLRKPTVRKERVVRPDSELGERPPEDNQSFQYDHEAFLGKEDSK
 TFDQLTPDESKERLGKIVDRIDNDGDFVTTEELKTWIKRVQKRYIFDNVAKVWKDYDRKDDKISWEEY
 KQATYGYLGNPAEFHDSSDHTFFKKMLPRDERRFKAADLNGDLTATREEFTAFLLHPEEFEHMKEIVVLE
 TLEDIDKNGDGFVDQDEYIADMF SHEENGPEPDWVL SEREQNEFRDLNKGKLDKDEIRHWILPQDYDH
 AQAEARHLVYESDKNKDEKL TKEEILENWNMFVGSQATNYGEDLTKNHDEL

TRTRPLEQKLISEEDLAANDILDYKDDDDKV

Tag:	C-Myc/DDK
Purity:	> 80% as determined by SDS-PAGE and Coomassie blue staining
Concentration:	>0.05 µg/µL as determined by microplate BCA method
Labeling Method:	Labeled with [U- ¹³ C ₆ , ¹⁵ N ₄]-L-Arginine and [U- ¹³ C ₆ , ¹⁵ N ₂]-L-Lysine
Buffer:	25 mM Tris-HCl, 100 mM glycine, pH 7.3
Storage:	Store at -80°C. Avoid repeated freeze-thaw cycles.
Stability:	Stable for 3 months from receipt of products under proper storage and handling conditions.
RefSeq:	<u>NP_002892</u>
RefSeq Size:	2529
RefSeq ORF:	993
Synonyms:	HEL-S-84; PIG20; RCAL; RCN
Locus ID:	5954

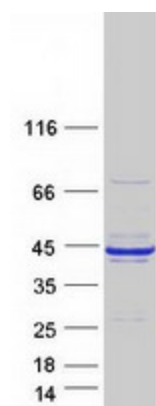

[View online »](#)

UniProt ID: [Q15293](#), [V9HW95](#)

Cytogenetics: 11p13

Summary: Reticulocalbin 1 is a calcium-binding protein located in the lumen of the ER. The protein contains six conserved regions with similarity to a high affinity Ca(+2)-binding motif, the EF-hand. High conservation of amino acid residues outside of these motifs, in comparison to mouse reticulocalbin, is consistent with a possible biochemical function besides that of calcium binding. In human endothelial and prostate cancer cell lines this protein localizes to the plasma membrane.[provided by RefSeq, Jan 2009]

Product images:



Coomassie blue staining of purified RCN1 protein (Cat# [TP303990]). The protein was produced from HEK293T cells transfected with RCN1 cDNA clone (Cat# [RC203990]) using MegaTran 2.0 (Cat# [TT210002]).