

Product datasheet for PH303975

MRPS28 (NM_014018) Human Mass Spec Standard

Product data:

Product Type:	Mass Spec Standards
Description:	MRPS28 MS Standard C13 and N15-labeled recombinant protein (NP_054737)
Species:	Human
Expression Host:	HEK293
Expression cDNA Clone or AA Sequence:	RC203975
Predicted MW:	20.8 kDa
Protein Sequence:	>RC203975 protein sequence Red=Cloning site Green=Tags(s) MAALCRTRAVAAESHFLRVFLFFRPFRGVGTESGSESGSSNAKEPKTRAGGFASALERHSELLQKVEPLQ KGSPKNVESFASMLRHSPLTQMGPAKDKLVIGRIFHIVENDLYIDFGGKFHCVCRPEVDGEKYQKGTRV RLRLDLELTSRFLGATTDTTVLEANAVLLGIQESKDSRSKEEHHEK TRTRPLEQKLISEEDLAANDILDYKDDDDKV
Tag:	C-Myc/DDK
Purity:	> 80% as determined by SDS-PAGE and Coomassie blue staining
Concentration:	>0.05 µg/µL as determined by microplate BCA method
Labeling Method:	Labeled with [U- ¹³ C ₆ , ¹⁵ N ₄]-L-Arginine and [U- ¹³ C ₆ , ¹⁵ N ₂]-L-Lysine
Buffer:	25 mM Tris-HCl, 100 mM glycine, pH 7.3
Storage:	Store at -80°C. Avoid repeated freeze-thaw cycles.
Stability:	Stable for 3 months from receipt of products under proper storage and handling conditions.
RefSeq:	NP_054737
RefSeq Size:	724
RefSeq ORF:	561
Synonyms:	COXPD47; HSPC007; MRP-S28; MRP-S35; MRPS35
Locus ID:	28957
UniProt ID:	Q9Y2Q9 , A0A0S2Z563



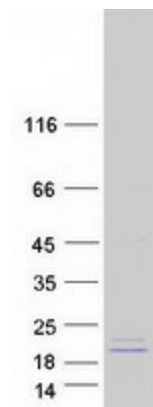
[View online »](#)

Cytogenetics: 8q21.13

Summary: Mammalian mitochondrial ribosomal proteins are encoded by nuclear genes and help in protein synthesis within the mitochondrion. Mitochondrial ribosomes (mitoribosomes) consist of a small 28S subunit and a large 39S subunit. They have an estimated 75% protein to rRNA composition compared to prokaryotic ribosomes, where this ratio is reversed. Another difference between mammalian mitoribosomes and prokaryotic ribosomes is that the latter contain a 5S rRNA. Among different species, the proteins comprising the mitoribosome differ greatly in sequence, and sometimes in biochemical properties, which prevents easy recognition by sequence homology. This gene encodes a 28S subunit protein that has been called mitochondrial ribosomal protein S35 in the literature. [provided by RefSeq, Jul 2008]

Protein Families: Druggable Genome

Product images:



Coomassie blue staining of purified MRPS28 protein (Cat# [TP303975]). The protein was produced from HEK293T cells transfected with MRPS28 cDNA clone (Cat# [RC203975]) using MegaTran 2.0 (Cat# [TT210002]).