

## Product datasheet for PH303965

### COPS7A (NM\_016319) Human Mass Spec Standard

#### Product data:

Product Type:	Mass Spec Standards
Description:	COPS7A MS Standard C13 and N15-labeled recombinant protein (NP_057403)
Species:	Human
Expression Host:	HEK293
Expression cDNA Clone or AA Sequence:	RC203965
Predicted MW:	30.1 kDa
Protein Sequence:	>RC203965 representing NM_016319 <b>Red</b> =Cloning site <b>Green</b> =Tags(s)  MSAEVKVTGQNQEQLLLAKSAKGAALATLIHQVLEAPGVYVFGELLDMPNVRELAESDFASTFRLLTVF AYGTYADYLAEARNLPPLTEAQKNLRHLSVVTLAAKVKCIPYAVLLEALALRNVRQLEDLVIEAVYADV LRGSLDQRNQRLEVDYSIGRDIQRQDL SAIARTLQEWCVGCEVVL SGIEEQVSRANQHKEQQLGLKQQIE SEVANLKKTIKVTTAAAAAATSQDPEQHL TELREPAPGTNQRQPSKKASKGKGLRGS AKIWSKSN  <b>TRTRPLEQKLI SEEDLAANDILDYKDDDDKV</b>
Tag:	C-Myc/DDK
Purity:	> 80% as determined by SDS-PAGE and Coomassie blue staining
Concentration:	>0.05 µg/µL as determined by microplate BCA method
Labeling Method:	Labeled with [U- <sup>13</sup> C <sub>6</sub> , <sup>15</sup> N <sub>4</sub> ]-L-Arginine and [U- <sup>13</sup> C <sub>6</sub> , <sup>15</sup> N <sub>2</sub> ]-L-Lysine
Buffer:	25 mM Tris-HCl, 100 mM glycine, pH 7.3
Storage:	Store at -80°C. Avoid repeated freeze-thaw cycles.
Stability:	Stable for 3 months from receipt of products under proper storage and handling conditions.
RefSeq:	<a href="#">NP_057403</a>
RefSeq Size:	1868
RefSeq ORF:	825
Synonyms:	CSN7; CSN7A; SGN7a
Locus ID:	50813
UniProt ID:	<a href="#">Q9UBW8</a>

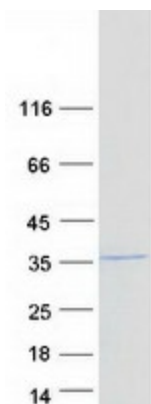


[View online »](#)

Cytogenetics: 12p13.31

**Summary:** This gene encodes a component of the COP9 signalosome, an evolutionarily conserved multi-subunit protease that regulates the activity of the ubiquitin conjugation pathway. Alternatively spliced transcript variants that encode the same protein have been described. [provided by RefSeq, Mar 2014]

### Product images:



Coomassie blue staining of purified COPS7A protein (Cat# [TP303965]). The protein was produced from HEK293T cells transfected with COPS7A cDNA clone (Cat# [RC203965]) using MegaTran 2.0 (Cat# [TT210002]).