

Product datasheet for PH303951

S100 alpha 6 (S100A6) (NM_014624) Human Mass Spec Standard

Product data:

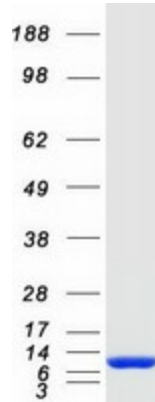
Product Type:	Mass Spec Standards
Description:	S100A6 MS Standard C13 and N15-labeled recombinant protein (NP_055439)
Species:	Human
Expression Host:	HEK293
Expression cDNA Clone or AA Sequence:	RC203951
Predicted MW:	10.2 kDa
Protein Sequence:	>RC203951 protein sequence Red=Cloning site Green=Tags(s) MACPLDQAIGLLVAIFHKYSGREGDKHTLSKKELKELIQKELTIGSKLQDAEIARLMEDLDRNKDQEVNF QEYVTF LGALALIYNEALKG TRTRPLEQKLISEEDLAANDILDYKDDDDKV
Tag:	C-Myc/DDK
Purity:	> 80% as determined by SDS-PAGE and Coomassie blue staining
Concentration:	>0.05 µg/µL as determined by microplate BCA method
Labeling Method:	Labeled with [U- 13C6, 15N4]-L-Arginine and [U- 13C6, 15N2]-L-Lysine
Buffer:	25 mM Tris-HCl, 100 mM glycine, pH 7.3
Storage:	Store at -80°C. Avoid repeated freeze-thaw cycles.
Stability:	Stable for 3 months from receipt of products under proper storage and handling conditions.
RefSeq:	NP_055439
RefSeq Size:	683
RefSeq ORF:	270
Synonyms:	2A9; 5B10; CABP; CACY; PRA; S10A6
Locus ID:	6277
UniProt ID:	P06703
Cytogenetics:	1q21.3



[View online »](#)

Summary:

The protein encoded by this gene is a member of the S100 family of proteins containing 2 EF-hand calcium-binding motifs. S100 proteins are localized in the cytoplasm and/or nucleus of a wide range of cells, and involved in the regulation of a number of cellular processes such as cell cycle progression and differentiation. S100 genes include at least 13 members which are located as a cluster on chromosome 1q21. This protein may function in stimulation of Ca²⁺-dependent insulin release, stimulation of prolactin secretion, and exocytosis. Chromosomal rearrangements and altered expression of this gene have been implicated in melanoma. [provided by RefSeq, Jul 2008]

Product images:

Coomassie blue staining of purified S100A6 protein (Cat# [TP303951]). The protein was produced from HEK293T cells transfected with S100A6 cDNA clone (Cat# [RC203951]) using MegaTran 2.0 (Cat# [TT210002]).