

Product datasheet for PH303946

Ribonuclease Inhibitor (RNH1) (NM_203388) Human Mass Spec Standard

Product data:

Product Type:	Mass Spec Standards
Description:	RNH1 MS Standard C13 and N15-labeled recombinant protein (NP_976322)
Species:	Human
Expression Host:	HEK293
Expression cDNA Clone or AA Sequence:	RC203946
Predicted MW:	50 kDa
Protein Sequence:	>RC203946 protein sequence Red=Cloning site Green=Tags(s)

MSLDIQSLDIQCEELSDARWAELLPLLQQCQVVRLDDCGLTEARCKDISSALRVNPALAEINLRSNELGD
VGVHCVLQGLQTPSCKIQKLSLQNCCLTGAGCGVLSSTLRTPTLQELHLSNLLGDAGLQLLCEGLLDP
QCRLEKLQLEYCSLSAASCEPLASVLRAPDFKELTVSNNDINEAGVRVLCQGLKDSQCLEALKLESCG
VTSNCRDLCGIVASKASLRELALGSNKLGDVGMALCPGLLHPSRLRTLWIWECGITAKGCGDLCRVL
RAKESLKELSLAGNELGDEGARLLCETLLEPGCQLES LWKSCSFTAACCSHFSSVLAQNRFLLELQISN
NRLEDAGVRELCQGLGQPGSVLRVWLADCDVSDSSCSLAATLLANHSLRELDLNNCLGDAGILQLVE
SVRQPGCLLEQLVLYDIYWSEEMEDRLQALEKDKPSLRVIS

TRTRPLEQKLISEEDLAANDILDYKDDDDKV

Tag:	C-Myc/DDK
Purity:	> 80% as determined by SDS-PAGE and Coomassie blue staining
Concentration:	>0.05 µg/µL as determined by microplate BCA method
Labeling Method:	Labeled with [U- ¹³ C ₆ , ¹⁵ N ₄]-L-Arginine and [U- ¹³ C ₆ , ¹⁵ N ₂]-L-Lysine
Buffer:	25 mM Tris-HCl, 100 mM glycine, pH 7.3
Storage:	Store at -80°C. Avoid repeated freeze-thaw cycles.
Stability:	Stable for 3 months from receipt of products under proper storage and handling conditions.
RefSeq:	NP_976322
RefSeq Size:	1774
RefSeq ORF:	1383
Synonyms:	RAI; RNH



[View online »](#)

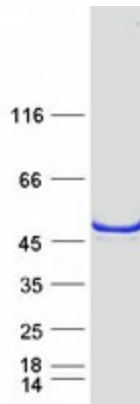
Locus ID: 6050

UniProt ID: [P13489](#), [A0A140VIT8](#)

Cytogenetics: 11p15.5

Summary: Placental ribonuclease inhibitor (PRI) is a member of a family of proteinaceous cytoplasmic RNase inhibitors that occur in many tissues and bind to both intracellular and extracellular RNases (summarized by Lee et al., 1988 [PubMed 3219362]). In addition to control of intracellular RNases, the inhibitor may have a role in the regulation of angiogenin (MIM 105850). Ribonuclease inhibitor, of 50,000 Da, binds to ribonucleases and holds them in a latent form. Since neutral and alkaline ribonucleases probably play a critical role in the turnover of RNA in eukaryotic cells, RNH may be essential for control of mRNA turnover; the interaction of eukaryotic cells with ribonuclease may be reversible in vivo.[supplied by OMIM, Jul 2010]

Product images:



Coomassie blue staining of purified RNH1 protein (Cat# [TP303946]). The protein was produced from HEK293T cells transfected with RNH1 cDNA clone (Cat# [RC203946]) using MegaTran 2.0 (Cat# [TT210002]).