

Product datasheet for PH303945

beta IV Tubulin (TUBB4A) (NM_006087) Human Mass Spec Standard

Product data:

Product Type:	Mass Spec Standards
Description:	TUBB4 MS Standard C13 and N15-labeled recombinant protein (NP_006078)
Species:	Human
Expression Host:	HEK293
Expression cDNA Clone or AA Sequence:	RC203945
Predicted MW:	49.6 kDa
Protein Sequence:	>RC203945 protein sequence Red=Cloning site Green=Tags(s)

MREIVHLQAGQCNGQIGAKFWEVISDEHGIDPTGTYHGSDLQLERINVYNEATGGNYVPRAVLVDLEP
GTMSVRSQPFQIFRPDNFVFGQSGAGNNWAKGHYTEGAELVDAVLDVVRKEAESCDCLOQFQLTHSLG
GGTGSGMGTLLISKIREEFPRIMNTFSVVPSPKVSSTVVEPYNATLSVHQLVENTDETYCIDNEALYDI
CFRTLKLTPTYGDLNHLVSATMSGVTTCLRFPGQLNADLRKLAVNMVFPRLHFFMPGFAPLTSRGSQQ
YRALTVPELTQQMFDANKMMAACDPRHGRYLTVAAVFRGRMSMKEVDEQMLSVQSKNSSYFVEWIPNNVK
TAVCDIPRGLKMAATFIGNSTAIQELFKRISEQFTAMFRRKAFLHWYTGEGMDEMEFTEAESNMNDLVS
EYQQYQDATAEEGEFEEEEEEVA

TRTRPLEQKLISEEDLAANDILDYKDDDDKV

Tag:	C-Myc/DDK
Purity:	> 80% as determined by SDS-PAGE and Coomassie blue staining
Concentration:	>0.05 µg/µL as determined by microplate BCA method
Labeling Method:	Labeled with [U- ¹³ C ₆ , ¹⁵ N ₄]-L-Arginine and [U- ¹³ C ₆ , ¹⁵ N ₂]-L-Lysine
Buffer:	25 mM Tris-HCl, 100 mM glycine, pH 7.3
Storage:	Store at -80°C. Avoid repeated freeze-thaw cycles.
Stability:	Stable for 3 months from receipt of products under proper storage and handling conditions.
RefSeq:	<u>NP_006078</u>
RefSeq Size:	2583
RefSeq ORF:	1332
Synonyms:	beta-5; DYT4; TUBB4



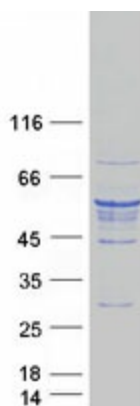
[View online »](#)

Locus ID: 10382
UniProt ID: [P04350](#)
Cytogenetics: 19p13.3

Summary: This gene encodes a member of the beta tubulin family. Beta tubulins are one of two core protein families (alpha and beta tubulins) that heterodimerize and assemble to form microtubules. Mutations in this gene cause hypomyelinating leukodystrophy-6 and autosomal dominant torsion dystonia-4. Alternate splicing results in multiple transcript variants encoding different isoforms. A pseudogene of this gene is found on chromosome X. [provided by RefSeq, Jan 2014]

Protein Families: Druggable Genome
Protein Pathways: Gap junction, Pathogenic Escherichia coli infection

Product images:



Coomassie blue staining of purified TUBB4A protein (Cat# [TP303945]). The protein was produced from HEK293T cells transfected with TUBB4A cDNA clone (Cat# [RC203945]) using MegaTran 2.0 (Cat# [TT210002]).