

Product datasheet for PH303942

NCE2 (UBE2F) (NM_080678) Human Mass Spec Standard

Product data:

Product Type:	Mass Spec Standards
Description:	UBE2F MS Standard C13 and N15-labeled recombinant protein (NP_542409)
Species:	Human
Expression Host:	HEK293
Expression cDNA Clone or AA Sequence:	RC203942
Predicted MW:	20.9 kDa
Protein Sequence:	>RC203942 representing NM_080678 Red=Cloning site Green=Tags(s) MLTLASKLKRDDGLKGSRTAATASDSTRVSVRDKLLVKEVAELEANLPCTCKVHFDPNKLHCFQLTVT PDEGYQGGKQFETEVDPAYNMVPPKVKCLTKIWHPNITETGEICLSLLREHSIDGTGWAPTRTLKDVV WGLNSLF TDLLNFDDPLNIEAAEHHLRDKEDFRNKVDDYIKRYAR TRTRPLEQKLISEEDLAANDILDYKDDDDKV
Tag:	C-Myc/DDK
Purity:	> 80% as determined by SDS-PAGE and Coomassie blue staining
Concentration:	>0.05 µg/µL as determined by microplate BCA method
Labeling Method:	Labeled with [U- ¹³ C ₆ , ¹⁵ N ₄]-L-Arginine and [U- ¹³ C ₆ , ¹⁵ N ₂]-L-Lysine
Buffer:	25 mM Tris-HCl, 100 mM glycine, pH 7.3
Storage:	Store at -80°C. Avoid repeated freeze-thaw cycles.
Stability:	Stable for 3 months from receipt of products under proper storage and handling conditions.
RefSeq:	NP_542409
RefSeq Size:	1366
RefSeq ORF:	555
Synonyms:	NCE2
Locus ID:	140739
UniProt ID:	Q969M7



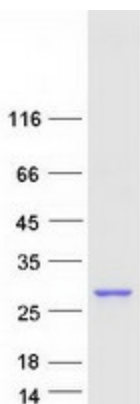
[View online »](#)

Cytogenetics: 2q37.3

Summary: Accepts the ubiquitin-like protein NEDD8 from the UBA3-NAE1 E1 complex and catalyzes its covalent attachment to other proteins. The specific interaction with the E3 ubiquitin ligase RBX2, but not RBX1, suggests that the RBX2-UBE2F complex neddylates specific target proteins, such as CUL5.[UniProtKB/Swiss-Prot Function]

Protein Pathways: Ubiquitin mediated proteolysis

Product images:



Coomassie blue staining of purified UBE2F protein (Cat# [TP303942]). The protein was produced from HEK293T cells transfected with UBE2F cDNA clone (Cat# [RC203942]) using MegaTran 2.0 (Cat# [TT210002]).