

Product datasheet for PH303941

Clusterin (CLU) (NM_203339) Human Mass Spec Standard

Product data:

Product Type:	Mass Spec Standards
Description:	CLU MS Standard C13 and N15-labeled recombinant protein (NP_976084)
Species:	Human
Expression Host:	HEK293
Expression cDNA Clone or AA Sequence:	RC203941
Predicted MW:	52.5 kDa
Protein Sequence:	>RC203941 protein sequence Red=Cloning site Green=Tags(s)
	MMKTLLLFVGLLLTWESGQVLGDQTVSDNELQEMSNQGSKYVNKEIQNAVNGVKQIKTLIEKTNEERKTL LSNLEEAKKKKEDALNETRESETKLKEELPGVCNETMMALWEECKPCKQTCMKFYARVCRSGSLVGRQL EEFLNQSSPFYFWMNGDRIDSLLENDRQQTHMLDVMQDHF SRASSIIDELFQDRFFFTREPQDTYHYLPFS LPHRRPHFFFPKSRIVRSLMPFSPYEPLNFHAMFQPFLEMIHEAQQAMDIFHSPAFQHPPTFIREGDD DRTVCREIRHNSTGCLRMKDQCDKCREILSVDCASTNNPSQAKLRRELDQVAERLTRYNELLSYQW KMLNTSSLLEQLNEQFNWVSRLANLTQGEDQYYLRVTTVASHTSDSDVPSGVTEVVVCLFSDPITVTVP VEVSRKNPKFMETVAEKALQEYRKKHREE
	SGPTRTRPLEQKLISEEDLAANDILDYKDDDDKV
Tag:	C-Myc/DDK
Purity:	> 80% as determined by SDS-PAGE and Coomassie blue staining
Concentration:	>0.05 µg/µL as determined by microplate BCA method
Labeling Method:	Labeled with [U- ¹³ C ₆ , ¹⁵ N ₄]-L-Arginine and [U- ¹³ C ₆ , ¹⁵ N ₂]-L-Lysine
Buffer:	25 mM Tris-HCl, 100 mM glycine, pH 7.3
Storage:	Store at -80°C. Avoid repeated freeze-thaw cycles.
Stability:	Stable for 3 months from receipt of products under proper storage and handling conditions.
RefSeq:	<u>NP_976084</u>
RefSeq Size:	3012
RefSeq ORF:	1347
Synonyms:	AAG4; APOJ; CLI; KUB1; MGC24903; SGP-2; SGP2; SP-40; TRPM-2; TRPM2



[View online »](#)

Locus ID: 1191

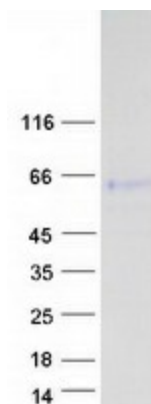
UniProt ID: [P10909](#)

Cytogenetics: 8p21.1

Summary: The protein encoded by this gene is a secreted chaperone that can under some stress conditions also be found in the cell cytosol. It has been suggested to be involved in several basic biological events such as cell death, tumor progression, and neurodegenerative disorders. Alternate splicing results in both coding and non-coding variants.[provided by RefSeq, May 2011]

Protein Families: Druggable Genome, Secreted Protein

Product images:



Coomassie blue staining of purified CLU protein (Cat# [TP303941]). The protein was produced from HEK293T cells transfected with CLU cDNA clone (Cat# [RC203941]) using MegaTran 2.0 (Cat# [TT210002]).