

Product datasheet for PH303940

GSG1L (NM_144675) Human Mass Spec Standard

Product data:

Product Type:	Mass Spec Standards
Description:	GSG1L MS Standard C13 and N15-labeled recombinant protein (NP_653276)
Species:	Human
Expression Host:	HEK293
Expression cDNA Clone or AA Sequence:	RC203940
Predicted MW:	20.6 kDa
Protein Sequence:	>RC203940 protein sequence Red =Cloning site Green =Tags(s) MCLELFHSSNVIDGLKLNFAAVFTVLSGLLGMVAHMMYTQVFQVTVSLGPEDWRPHSWDYGWSFCLAWG SFTCCMAASVTTLNSYTKTVIEFRHKRVFEQGYREPTFIDPEAIKYFRERMEKRDGSEEDFHLDGRHE RYPARHQPHMADSWPRSSAQEAPELNRQCWVLGHWW TR TRPLEQKLISEEDLAANDILDYKDDDDKV
Tag:	C-Myc/DDK
Purity:	> 80% as determined by SDS-PAGE and Coomassie blue staining
Concentration:	>0.05 µg/µL as determined by microplate BCA method
Labeling Method:	Labeled with [U- ¹³ C ₆ , ¹⁵ N ₄]-L-Arginine and [U- ¹³ C ₆ , ¹⁵ N ₂]-L-Lysine
Buffer:	25 mM Tris-HCl, 100 mM glycine, pH 7.3
Storage:	Store at -80°C. Avoid repeated freeze-thaw cycles.
Stability:	Stable for 3 months from receipt of products under proper storage and handling conditions.
RefSeq:	NP_653276
RefSeq Size:	4538
RefSeq ORF:	528
Synonyms:	PRO19651
Locus ID:	146395
UniProt ID:	Q6UXU4



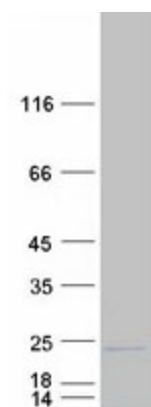
[View online »](#)

Cytogenetics: 16p12.1

Summary: As a component of the inner core of AMPAR complex, modifies AMPA receptor (AMPA) gating.[UniProtKB/Swiss-Prot Function]

Protein Families: Transmembrane

Product images:



Coomassie blue staining of purified GSG1L protein (Cat# [TP303940]). The protein was produced from HEK293T cells transfected with GSG1L cDNA clone (Cat# [RC203940]) using MegaTran 2.0 (Cat# [TT210002]).