

Product datasheet for PH303931

MINA53 (MINA) (NM_153182) Human Mass Spec Standard

Product data:

Product Type:	Mass Spec Standards
Description:	MINA MS Standard C13 and N15-labeled recombinant protein (NP_694822)
Species:	Human
Expression Host:	HEK293
Expression cDNA Clone or AA Sequence:	RC203931
Predicted MW:	52.8 kDa
Protein Sequence:	>RC203931 protein sequence Red=Cloning site Green=Tags(s)

MPKKAKPTGSGKEEGPAPCKQMKLEAAGGPSALNFDSPSSLFESLISPIKTETFFKEFWQKPLLIQRDD
PALATYYGSLFKLTDLKSLSRGMYYGRDYNVCRVCVNGKKVNLKDGKAHFLQLRKDFDQKRATIQFHQP
QRFKDELWRIQEKLCEYFGLVGSNVYITPAGSQGLPPHYDDVEVFILQLEGEKHWRLYHPTVPLAREYS
VEAEERIGRPVHEFMLKPGDLLYFPRGTIHQADTPAGLAHSTHVTISTYQNNSWGDFLLDTISGLVFDTA
KEDVELRTGIPRQLLLQVESTTVATRRLSGFLRTLADRLEGTKELLSSDMKKDFIMHRLPPYSAGDGAEL
STPGGKLPRLDSVVRLQFKDHIVLTVLPDQDQSDQETQEKMYIYHSLKNSRETHMMGNEEETFHGLRFP
LSHLDALKQIWNSPAISVKDLKLTDEEKESLVLVSLWTECLIQVV

TRTRPLEQKLISEEDLAANDILDYKDDDDKV

Tag:	C-Myc/DDK
Purity:	> 80% as determined by SDS-PAGE and Coomassie blue staining
Concentration:	>0.05 µg/µL as determined by microplate BCA method
Labeling Method:	Labeled with [U- 13C6, 15N4]-L-Arginine and [U- 13C6, 15N2]-L-Lysine
Buffer:	25 mM Tris-HCl, 100 mM glycine, pH 7.3
Storage:	Store at -80°C. Avoid repeated freeze-thaw cycles.
Stability:	Stable for 3 months from receipt of products under proper storage and handling conditions.
RefSeq:	<u>NP_694822</u>
RefSeq Size:	4875
RefSeq ORF:	1395
Synonyms:	JMJD10; MDIG; MINA; MINA53; NO52; ROX



[View online »](#)

Locus ID: 84864

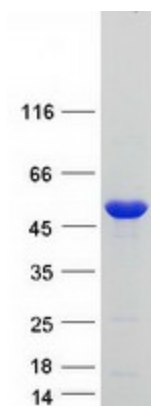
UniProt ID: [Q8IUJ8](#)

Cytogenetics: 3q11.2

Summary: MINA is a c-Myc (MYC; MIM 190080) target gene that may play a role in cell proliferation or regulation of cell growth. (Tsuneoka et al., 2002 [PubMed 12091391]; Zhang et al., 2005 [PubMed 15897898]).[supplied by OMIM, May 2008]

Protein Families: Druggable Genome

Product images:



Coomassie blue staining of purified RIOX2 protein (Cat# [TP303931]). The protein was produced from HEK293T cells transfected with RIOX2 cDNA clone (Cat# [RC203931]) using MegaTran 2.0 (Cat# [TT210002]).