

Product datasheet for PH303930

PHLPP (PHLPP1) (NM_194449) Human Mass Spec Standard

Product data:

Product Type:	Mass Spec Standards
Description:	PHLPP1 MS Standard C13 and N15-labeled recombinant protein (NP_919431)
Species:	Human
Expression Host:	HEK293
Expression cDNA Clone or AA Sequence:	RC203930
Predicted MW:	184.5 kDa
Protein Sequence:	>RC203930 representing NM_194449 Red=Cloning site Green=Tags(s)

MDSEIGCLIRFYAGKPHSTGSSERIQLSGMYNVRKGMQLPVNRWTRRQVILCGTCLIVSSVKDSLTKGM
HVLPLIGGKVEEVKHKHCLAFSSSGPQSQTYYICFDTFTEYLRWLRQVSKVASQRISVVDLSCCSLEHL
PANLFYSQDLTHLNLKQNFLRQNPSPAAPAGLNELQRFTKLKSLNLSNNHLGDFPLAVCSIPTLAELNVS
CNALRSVPAAVGVMHNLQTFLLDGNFLQSLPAELENMKQLSYLGLSFNEFTDIPEVLEKL TAVDKLCMSG
NCVETLRLQALRKMPHIKHVDLRLNVIRKLI ADEVDFLQHVTDLDRDNKLGDLAMIFNNIEVLHCERN
QLVTLDICGYFLKALYASSNELVQLDVYPVPNYLSYMDVSRNLENVPEWVCESTRKLEVLDIHGNQICEL
PARLFCNSSLRKLLAGHNQLARLPERLERTSVEVLDVQHNQLLELPPNLLMKADSLRFLNASANKLES
PATLSEETNSILQELYL TNNSLTDKCVPLLTGHPHLKILHMAYNRLQSFPAASKMAKLEEEIDLSGNKL
KAIPPTIMNCRMHMTVIAHSNCEIVFPEVMQLPEIKCVLSCNELSEVTLPENLPPKLQELDLTGNPRLV
LDHKTLELLNIRCFKIDQPSTGDASGAPAVWSHGYTEASGVKNKLCVAALSVNFCNREALYGVDFGD
RNVEVPYLLQCTMSDILAEELQTKNEEYVMVNTFIVMQRKLGTAGQKLGGA AVLCHIKHDPVDPGGSFT
LTSANVGKQTVLCRNGKPLPLRSYIMSCEEELKRIKQHKAIITEDGKVNVTSTRILGYTFLHPSV
PRPHVQSVLLTPQDEFFILGSKGLWDSLVEEAVEAVRNPDALAAAKKCTLAQSYGCHDSISAVVVQL
SVTDSFCCCEL SAGGAVPPSPGIFPPSVNMVIKDRPSDGLGVPSSSSGMASEISSELSTSEMSSEVGS
TASDEPPPGALSENSPAYPSEQRCMLHPICLSNSFQRQLSSATFSSAFSDNGLSDDEEPIEGVFTNGSR
VEVEVDIHCSRAKEKEKQQLLQVPAEASDEGIVISANEDEPGLPRKADFSAVGTIGRRRANGSVAPQER
SHNVIEVATDAPLRKPGGYFAAPAQDPDDQFIIPPELEEEVKEIMKHHQEQQQQQPPPPQLQPQLPR
HYQLDQLPDYYDTPL

TRTRPLEQKLISEEDLAANDILDYKDDDDKV

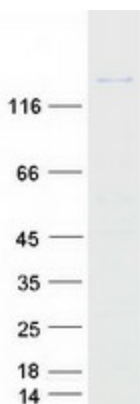
Tag:	C-Myc/DDK
Purity:	> 80% as determined by SDS-PAGE and Coomassie blue staining
Concentration:	>0.05 µg/µL as determined by microplate BCA method
Labeling Method:	Labeled with [U- ¹³ C ₆ , ¹⁵ N ₄]-L-Arginine and [U- ¹³ C ₆ , ¹⁵ N ₂]-L-Lysine



[View online »](#)

Buffer:	25 mM Tris-HCl, 100 mM glycine, pH 7.3
Storage:	Store at -80°C. Avoid repeated freeze-thaw cycles.
Stability:	Stable for 3 months from receipt of products under proper storage and handling conditions.
RefSeq:	NP_919431
RefSeq Size:	4798
RefSeq ORF:	3615
Synonyms:	PHLPP; PLEKHE1; PPM3A; SCOP
Locus ID:	23239
UniProt ID:	O60346
Cytogenetics:	18q21.33
Summary:	This gene encodes a member of the serine/threonine phosphatase family. The encoded protein promotes apoptosis by dephosphorylating and inactivating the serine/threonine kinase Akt, and functions as a tumor suppressor in multiple types of cancer. Increased expression of this gene may also play a role in obesity and type 2 diabetes by interfering with Akt-mediated insulin signaling. [provided by RefSeq, Dec 2011]

Product images:



Coomassie blue staining of purified PHLPP1 protein (Cat# [TP303930]). The protein was produced from HEK293T cells transfected with PHLPP1 cDNA clone (Cat# [RC203930]) using MegaTran 2.0 (Cat# [TT210002]).