

Product datasheet for PH303909

MRRF (NM_138777) Human Mass Spec Standard

Product data:

Product Type:	Mass Spec Standards
Description:	MRRF MS Standard C13 and N15-labeled recombinant protein (NP_620132)
Species:	Human
Expression Host:	HEK293
Expression cDNA Clone or AA Sequence:	RC203909
Predicted MW:	29.3 kDa
Protein Sequence:	>RC203909 protein sequence Red=Cloning site Green=Tags(s) MALGLKCFRMVHPTFRNYLAASIRPVSEVTLKTVHERQHGHRQYMAYSAVPVRHFATKKAKAKGKGSQT RVNINAALVEDIINLEEVNEEMKSVIEALKDNFNKTLNIRTSPGSLDKIAVVTADGKLALNQISQISMKS PQLILVNMAFPECTAAAIKAIRESGMNLNPEVEGTLIRVPIPVQVTRHREMLVKLAKQNTNKAKDSLRLK VRTNSMNLKSKSDTVSEDTIRLIEKQISQMADDTVAELDRHLAVKTKELLG TRTRPLEQKLI SEEDLAANDILDYKDDDDKV
Tag:	C-Myc/DDK
Purity:	> 80% as determined by SDS-PAGE and Coomassie blue staining
Concentration:	>0.05 µg/µL as determined by microplate BCA method
Labeling Method:	Labeled with [U- 13C6, 15N4]-L-Arginine and [U- 13C6, 15N2]-L-Lysine
Buffer:	25 mM Tris-HCl, 100 mM glycine, pH 7.3
Storage:	Store at -80°C. Avoid repeated freeze-thaw cycles.
Stability:	Stable for 3 months from receipt of products under proper storage and handling conditions.
RefSeq:	NP_620132
RefSeq Size:	2036
RefSeq ORF:	786
Synonyms:	MRFF; MTRRF; RRF
Locus ID:	92399
UniProt ID:	Q96E11



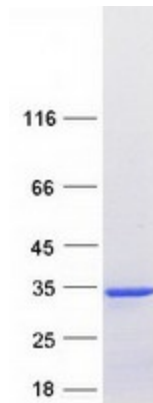
[View online »](#)

Cytogenetics: 9q33.2

Summary: This gene encodes a ribosome recycling factor, which is a component of the mitochondrial translational machinery. The encoded protein, along with mitochondrial elongation factor 2, functions in ribosomal recycling at the termination of mitochondrial translation by mediating the disassembly of ribosomes from messenger RNA. A pseudogene of this gene has been identified on chromosome X. [provided by RefSeq, Oct 2016]

Protein Families: Transmembrane

Product images:



Coomassie blue staining of purified MRRF protein (Cat# [TP303909]). The protein was produced from HEK293T cells transfected with MRRF cDNA clone (Cat# [RC203909]) using MegaTran 2.0 (Cat# [TT210002]).