

Product datasheet for PH303893

NHLH1 (NM_005598) Human Mass Spec Standard

Product data:

Product Type:	Mass Spec Standards
Description:	NHLH1 MS Standard C13 and N15-labeled recombinant protein (NP_005589)
Species:	Human
Expression Host:	HEK293
Expression cDNA Clone or AA Sequence:	RC203893
Predicted MW:	14.6 kDa
Protein Sequence:	>RC203893 protein sequence Red =Cloning site Green =Tags(s) MMLNSDTMELDLPPTHSETESGFSDCGGGAGPDGAGPGGGQARGPEPEPGRKDLQHLSREERRRRR RATAKYRTAHATRERIRVEAFNLFAELRLLPTLPPDKKLSKIEILRLAICYISYLNHVLDV TRTRPLEQKLISEEDLAANDILDYKDDDDKV
Tag:	C-Myc/DDK
Purity:	> 80% as determined by SDS-PAGE and Coomassie blue staining
Concentration:	>0.05 µg/µL as determined by microplate BCA method
Labeling Method:	Labeled with [U- 13C6, 15N4]-L-Arginine and [U- 13C6, 15N2]-L-Lysine
Buffer:	25 mM Tris-HCl, 100 mM glycine, pH 7.3
Storage:	Store at -80°C. Avoid repeated freeze-thaw cycles.
Stability:	Stable for 3 months from receipt of products under proper storage and handling conditions.
RefSeq:	NP_005589
RefSeq Size:	2594
RefSeq ORF:	399
Synonyms:	bHLHa35; HEN1; NSCL; NSCL1
Locus ID:	4807
UniProt ID:	Q02575 , Q5T203
Cytogenetics:	1q23.2



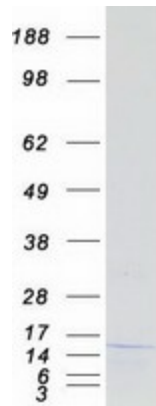
[View online »](#)

Summary:

The helix-loop-helix (HLH) proteins are a family of putative transcription factors, some of which have been shown to play an important role in growth and development of a wide variety of tissues and species. Four members of this family have been clearly implicated in tumorigenesis via their involvement in chromosomal translocations in lymphoid tumors: MYC (MIM 190080), LYL1 (MIM 151440), E2A (MIM 147141), and SCL (MIM 187040).[supplied by OMIM, Nov 2002]

Protein Families:

Transcription Factors

Product images:

Coomassie blue staining of purified NHLH1 protein (Cat# [TP303893]). The protein was produced from HEK293T cells transfected with NHLH1 cDNA clone (Cat# [RC203893]) using MegaTran 2.0 (Cat# [TT210002]).