

Product datasheet for PH303886

c20orf72 (MGME1) (NM_052865) Human Mass Spec Standard

Product data:

Product Type:	Mass Spec Standards
Description:	C20orf72 MS Standard C13 and N15-labeled recombinant protein (NP_443097)
Species:	Human
Expression Host:	HEK293
Expression cDNA Clone or AA Sequence:	RC203886
Predicted MW:	39.4 kDa
Protein Sequence:	>RC203886 protein sequence Red=Cloning site Green=Tags(s) MKMKLFQTICRQLRSSKFSVESAAALVAFSTSSYSCGRKKKVNPHYEEVDQEKYSNLVQSVLSSRGVAQTPG SVEEDALLCGPVSKHKLPNQGEDRRVPQNWFIIFNPERSDKPNASDPSVPLKIPLQRNVIPSVTRVLQQT MTKQQVFLLERWKQRMILELGEDGFKEYTSNVFLQGKRFHEALESILSPQETLKERDENLLKSGYIESVQ HILKDVSGVRALESVQHETLNYIGLLDCVAEYQKLCVIDWKTSEKPKPFIQSTFDNPLQVVAYMGAMN HDTNYSFQVQCGLIVVAYKDGSPAHPHFMDAELCSQYWTKWLLRLEEYTEKKKNQNIQKPEYSE TRTRPLEQKLISEEDLAANDILDYKDDDDKV
Tag:	C-Myc/DDK
Purity:	> 80% as determined by SDS-PAGE and Coomassie blue staining
Concentration:	>0.05 µg/µL as determined by microplate BCA method
Labeling Method:	Labeled with [U- ¹³ C ₆ , ¹⁵ N ₄]-L-Arginine and [U- ¹³ C ₆ , ¹⁵ N ₂]-L-Lysine
Buffer:	25 mM Tris-HCl, 100 mM glycine, pH 7.3
Storage:	Store at -80°C. Avoid repeated freeze-thaw cycles.
Stability:	Stable for 3 months from receipt of products under proper storage and handling conditions.
RefSeq:	NP_443097
RefSeq Size:	2142
RefSeq ORF:	1032
Synonyms:	bA504H3.4; C20orf72; DDK1; MTDPS11
Locus ID:	92667



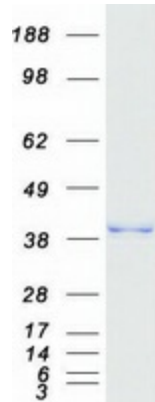
[View online »](#)

UniProt ID: [Q9BQP7](#)

Cytogenetics: 20p11.23

Summary: The protein encoded by this gene is a nuclear-encoded mitochondrial protein necessary for the maintenance of mitochondrial genome synthesis. The encoded protein is a RecB-type exonuclease and primarily cleaves single-stranded DNA. Defects in this gene have been associated with mitochondrial DNA depletion syndrome-11. Three transcript variants encoding different isoforms have been found for this gene. [provided by RefSeq, Jul 2015]

Product images:



Coomassie blue staining of purified MGME1 protein (Cat# [TP303886]). The protein was produced from HEK293T cells transfected with MGME1 cDNA clone (Cat# [RC203886]) using MegaTran 2.0 (Cat# [TT210002]).