

## Product datasheet for PH303854

### NORE1 (RASSF5) (NM\_182665) Human Mass Spec Standard

#### Product data:

Product Type:	Mass Spec Standards
Description:	RASSF5 MS Standard C13 and N15-labeled recombinant protein (NP_872606)
Species:	Human
Expression Host:	HEK293
Expression cDNA Clone or AA Sequence:	RC203854
Predicted MW:	30.4 kDa
Protein Sequence:	>RC203854 protein sequence Red=Cloning site Green=Tags(s)  MTVDSSMSSGYCSLDEELEDCCFFTAKTTFFRNAQSKHLKSNVCKPVEETQRPPTLQEIKQKIDSYNTREK NCLGMKLSHDGTYTGFIKVLKLRPVTVPAGIRPQSIYDAIKEVNLAATTDKRTSFYLPDAIKQLHIS STTTVSEVIQGLLKKFMVVDNPQKFALFKRIHKDGQVLFQKLSIADRPLYRLLAGPDTEVLSFVLKENE TGEVEWDAFSIPELQNFLLTILEKEEQDKIQVQKKYDKFRQKLEALRESQKPG  TRTRPLEQKLISEEDLAANDILDYKDDDDKV
Tag:	C-Myc/DDK
Purity:	> 80% as determined by SDS-PAGE and Coomassie blue staining
Concentration:	>0.05 µg/µL as determined by microplate BCA method
Labeling Method:	Labeled with [U- 13C6, 15N4]-L-Arginine and [U- 13C6, 15N2]-L-Lysine
Buffer:	25 mM Tris-HCl, 100 mM glycine, pH 7.3
Storage:	Store at -80°C. Avoid repeated freeze-thaw cycles.
Stability:	Stable for 3 months from receipt of products under proper storage and handling conditions.
RefSeq:	<a href="#">NP_872606</a>
RefSeq Size:	3531
RefSeq ORF:	795
Synonyms:	Maxp1; NORE1; NORE1A; NORE1B; RAPL; RASSF3
Locus ID:	83593
UniProt ID:	<a href="#">Q8WWW0</a>



[View online »](#)

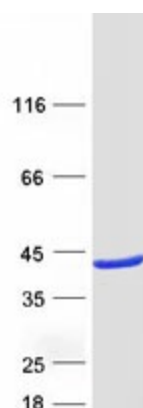
**Cytogenetics:** 1q32.1

**Summary:** This gene is a member of the Ras association domain family. It functions as a tumor suppressor, and is inactivated in a variety of cancers. The encoded protein localizes to centrosomes and microtubules, and associates with the GTP-activated forms of Ras, Rap1, and several other Ras-like small GTPases. The protein regulates lymphocyte adhesion and suppresses cell growth in response to activated Rap1 or Ras. Multiple transcript variants encoding different isoforms have been found for this gene. [provided by RefSeq, Jul 2008]

**Protein Families:** Druggable Genome

**Protein Pathways:** Leukocyte transendothelial migration, Non-small cell lung cancer, Pathways in cancer

### Product images:



Coomassie blue staining of purified RASSF5 protein (Cat# [TP303854]). The protein was produced from HEK293T cells transfected with RASSF5 cDNA clone (Cat# [RC203854]) using MegaTran 2.0 (Cat# [TT210002]).