

Product datasheet for PH303844

BORCS5 (NM_058169) Human Mass Spec Standard

Product data:

Product Type:	Mass Spec Standards
Description:	LOH12CR1 MS Standard C13 and N15-labeled recombinant protein (NP_477517)
Species:	Human
Expression Host:	HEK293
Expression cDNA Clone or AA Sequence:	RC203844
Predicted MW:	22.2 kDa
Protein Sequence:	>RC203844 protein sequence Red =Cloning site Green =Tags(s) MGSEQSSEAESRPNDLNSSVTPSPAKHRAKMDDIVVVAQGSQASRNVSNDPDIKLEIPTFQPLLKGLL SGQTSPTNAKLEKLDSSQVLQLCLRYQDHLHQCAEAVAFDQNALVKRIKEMDLSVETLFSFMQERQKRYA KYAEQIQKVNEMSAILRRIQMGIDQTVPLLDRLNSMLPEGERLEPF SMKPDRELRL TR TRPLEQKLISEEDLAANDILDYKDDDDKV
Tag:	C-Myc/DDK
Purity:	> 80% as determined by SDS-PAGE and Coomassie blue staining
Concentration:	>0.05 µg/µL as determined by microplate BCA method
Labeling Method:	Labeled with [U- ¹³ C ₆ , ¹⁵ N ₄]-L-Arginine and [U- ¹³ C ₆ , ¹⁵ N ₂]-L-Lysine
Buffer:	25 mM Tris-HCl, 100 mM glycine, pH 7.3
Storage:	Store at -80°C. Avoid repeated freeze-thaw cycles.
Stability:	Stable for 3 months from receipt of products under proper storage and handling conditions.
RefSeq:	NP_477517
RefSeq Size:	2092
RefSeq ORF:	588
Synonyms:	LOH1CR12; LOH12CR1
Locus ID:	118426
UniProt ID:	Q969J3

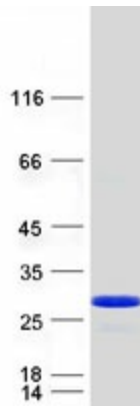


[View online »](#)

Cytogenetics: 12p13.2

Summary: As part of the BORC complex may play a role in lysosomes movement and localization at the cell periphery. Associated with the cytosolic face of lysosomes, the BORC complex may recruit ARL8B and couple lysosomes to microtubule plus-end-directed kinesin motor. Thereby, it may indirectly play a role in cell spreading and motility.[UniProtKB/Swiss-Prot Function]

Product images:



Coomassie blue staining of purified BORCS5 protein (Cat# [TP303844]). The protein was produced from HEK293T cells transfected with BORCS5 cDNA clone (Cat# [RC203844]) using MegaTran 2.0 (Cat# [TT210002]).