

Product datasheet for PH303832

C1QC (NM_172369) Human Mass Spec Standard

Product data:

Product Type:	Mass Spec Standards
Description:	C1QC MS Standard C13 and N15-labeled recombinant protein (NP_758957)
Species:	Human
Expression Host:	HEK293
Expression cDNA Clone or AA Sequence:	RC203832
Predicted MW:	25.8 kDa
Protein Sequence:	>RC203832 protein sequence Red=Cloning site Green=Tags(s) MDVGPSSLPHLGLKLLLLLLLLPLRGQANTGCGYIPGMPGLPGAPGKDGVDGLPGPKGEPGIPAIPGIRG PKGQKGEPGLPGHPGKNGPMGPPGMPGVPGMGIPEGEGEGRYKQKQFSVFTVTRQTHQPPAPNSLIRF NAVLTNPQGDYDTSTGKFTCKVPLGYFVYHASHTANLCVLLYRSGVKVVTFCGHTSKTNQVNSGGVLLR LQVGEEVWLAVNDYYDMVGIQGSDSVFSGFLLFPD SGPTRTRPLEQKLISEEDLAANDILDYKDDDDKV
Tag:	C-Myc/DDK
Purity:	> 80% as determined by SDS-PAGE and Coomassie blue staining
Concentration:	>0.05 µg/µL as determined by microplate BCA method
Labeling Method:	Labeled with [U- ¹³ C ₆ , ¹⁵ N ₄]-L-Arginine and [U- ¹³ C ₆ , ¹⁵ N ₂]-L-Lysine
Buffer:	25 mM Tris-HCl, 100 mM glycine, pH 7.3
Storage:	Store at -80°C. Avoid repeated freeze-thaw cycles.
Stability:	Stable for 3 months from receipt of products under proper storage and handling conditions.
RefSeq:	NP_758957
RefSeq Size:	1182
RefSeq ORF:	735
Synonyms:	C1Q-C; C1QG
Locus ID:	714
UniProt ID:	P02747 , A0A024RAA7



[View online »](#)

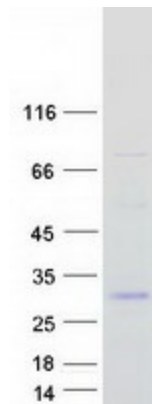
Cytogenetics: 1p36.12

Summary: This gene encodes the C-chain polypeptide of serum complement subcomponent C1q, which associates with C1r and C1s to yield the first component of the serum complement system. C1q is composed of 18 polypeptide chains which include 6 A-chains, 6 B-chains, and 6 C-chains. Each chain contains an N-terminal collagen-like region and a C-terminal C1q globular domain. C1q deficiency is associated with lupus erythematosus and glomerulonephritis. [provided by RefSeq, Dec 2016]

Protein Families: Secreted Protein

Protein Pathways: Complement and coagulation cascades, Prion diseases, Systemic lupus erythematosus

Product images:



Coomassie blue staining of purified C1QC protein (Cat# [TP303832]). The protein was produced from HEK293T cells transfected with C1QC cDNA clone (Cat# [RC203832]) using MegaTran 2.0 (Cat# [TT210002]).