

Product datasheet for PH303831

ROC2 (RNF7) (NM_014245) Human Mass Spec Standard

Product data:

Product Type:	Mass Spec Standards
Description:	RNF7 MS Standard C13 and N15-labeled recombinant protein (NP_055060)
Species:	Human
Expression Host:	HEK293
Expression cDNA Clone or AA Sequence:	RC203831
Predicted MW:	12.7 kDa
Protein Sequence:	>RC203831 protein sequence Red =Cloning site Green =Tags(s) MADVEDGEETCALASHSGSSGSKSGGDKMFLKKNVAVMWSWVVECDTCAICRVQVMDACLRCQAENKQ EDCVVVWGEKNHSFHNCMSLWVKQNNRCPLCQQDWVVQRIGK TRTRPLEQKLISEEDLAANDILDYKDDDDKV
Tag:	C-Myc/DDK
Purity:	> 80% as determined by SDS-PAGE and Coomassie blue staining
Concentration:	>0.05 µg/µL as determined by microplate BCA method
Labeling Method:	Labeled with [U- ¹³ C ₆ , ¹⁵ N ₄]-L-Arginine and [U- ¹³ C ₆ , ¹⁵ N ₂]-L-Lysine
Buffer:	25 mM Tris-HCl, 100 mM glycine, pH 7.3
Storage:	Store at -80°C. Avoid repeated freeze-thaw cycles.
Stability:	Stable for 3 months from receipt of products under proper storage and handling conditions.
RefSeq:	NP_055060
RefSeq Size:	2010
RefSeq ORF:	339
Synonyms:	CKBBP1; rbx2; ROC2; SAG
Locus ID:	9616
UniProt ID:	Q9UBF6
Cytogenetics:	3q23



[View online »](#)

Summary:

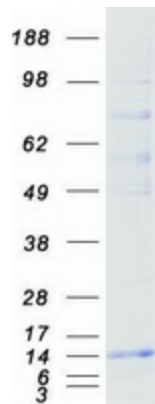
The protein encoded by this gene is a highly conserved ring finger protein. It is an essential subunit of SKP1-cullin/CDC53-F box protein ubiquitin ligases, which are a part of the protein degradation machinery important for cell cycle progression and signal transduction. This protein interacts with, and is a substrate of, casein kinase II (CSNK2A1/CKII). The phosphorylation of this protein by CSNK2A1 has been shown to promote the degradation of IκappaBα (CHUK/IKK-α/IKBKA) and p27Kip1 (CDKN1B). Alternatively spliced transcript variants encoding distinct isoforms have been reported. [provided by RefSeq, Jul 2008]

Protein Families:

Druggable Genome

Protein Pathways:

Ubiquitin mediated proteolysis

Product images:

Coomassie blue staining of purified RNF7 protein (Cat# [TP303831]). The protein was produced from HEK293T cells transfected with RNF7 cDNA clone (Cat# [RC203831]) using MegaTran 2.0 (Cat# [TT210002]).