

Product datasheet for PH303826

GLO1 (NM_006708) Human Mass Spec Standard

Product data:

| | |
|---------------------------------------|--|
| Product Type: | Mass Spec Standards |
| Description: | GLO1 MS Standard C13 and N15-labeled recombinant protein (NP_006699) |
| Species: | Human |
| Expression Host: | HEK293 |
| Expression cDNA Clone or AA Sequence: | RC203826 |
| Predicted MW: | 20.8 kDa |
| Protein Sequence: | >RC203826 protein sequence Red=Cloning site Green=Tags(s) MAEPQPPSGGLTDEAALSVCSDADPSTKDFLLQQTMLRVKDPKSLDFYTRVLGMTLIQKCDFPIMKFSL YFLAYEDKNDIPKEKDEKIAWALSRKATLELTHNWGTEDETQSYHNGNSDPRGFGHIGIAVPDVYSACK RFEELGVKFKVKKPDDGKMKGLAFIQDPDGYWIEILNPNKMATLM TRTRPLEQKLISEEDLAANDILDYKDDDDKV |
| Tag: | C-Myc/DDK |
| Purity: | > 80% as determined by SDS-PAGE and Coomassie blue staining |
| Concentration: | >0.05 µg/µL as determined by microplate BCA method |
| Labeling Method: | Labeled with [U- ¹³ C ₆ , ¹⁵ N ₄]-L-Arginine and [U- ¹³ C ₆ , ¹⁵ N ₂]-L-Lysine |
| Buffer: | 25 mM Tris-HCl, 100 mM glycine, pH 7.3 |
| Storage: | Store at -80°C. Avoid repeated freeze-thaw cycles. |
| Stability: | Stable for 3 months from receipt of products under proper storage and handling conditions. |
| RefSeq: | NP_006699 |
| RefSeq Size: | 2071 |
| RefSeq ORF: | 552 |
| Synonyms: | GLOD1; GLYI; HEL-S-74 |
| Locus ID: | 2739 |
| UniProt ID: | Q04760 , X5DNM4 |



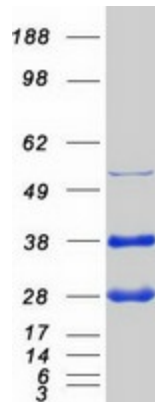
[View online »](#)

Cytogenetics: 6p21.2

Summary: The enzyme encoded by this gene is responsible for the catalysis and formation of S-lactoyl-glutathione from methylglyoxal condensation and reduced glutathione. Glyoxalase I is linked to HLA and is localized to 6p21.3-p21.1, between HLA and the centromere. [provided by RefSeq, Jul 2008]

Protein Pathways: Pyruvate metabolism

Product images:



Coomassie blue staining of purified GLO1 protein (Cat# [TP303826]). The protein was produced from HEK293T cells transfected with GLO1 cDNA clone (Cat# [RC203826]) using MegaTran 2.0 (Cat# [TT210002]).