

Product datasheet for PH303824

GDI1 (NM_001493) Human Mass Spec Standard

Product data:

Product Type:	Mass Spec Standards
Description:	GDI1 MS Standard C13 and N15-labeled recombinant protein (NP_001484)
Species:	Human
Expression Host:	HEK293
Expression cDNA Clone or AA Sequence:	RC203824
Predicted MW:	50.6 kDa
Protein Sequence:	>RC203824 protein sequence Red=Cloning site Green=Tags(s)
	MDEEYDVIVLGTGLTECILSGIMSVNGKKVLHMDRNPYYGGESSITPLEELYKRFQLLEGPPESMGRGR DWNVDLIPKFLMANGQLVKMLLYTEVTRYLDFKVVVEGSFYKGGKIYKVPSTETEALASNLMGMFEKRRF RKFLVFVANFDENDPKTFEGVDPQTSMRDVYRKFDLGGQVDIDFTGHALALYRTDDYLDQPCLETVNRK LYSESLARYGKSPYLPLYGLGELPQGFARLSAIYGGTYMLNKPVDDIIMENKVVGVKSEGEVARCKQL ICDPSYIPDRVRKAGQVIRIICILSHPKNTDANSCQIIPQNQVNRKSDIYVCMISYAHNVAQGYI AIASTTVETTDPEKEVEPALELLEPIDQKFVAISDLYEPIDDGCEsqVFCSCSYDATTHFETTCNDIKDI YKRMAGTAFDFENMKRKQNDVFGAEQ
	TRTRPLEQKLISEEDLAANDILDYKDDDDKV
Tag:	C-Myc/DDK
Purity:	> 80% as determined by SDS-PAGE and Coomassie blue staining
Concentration:	>0.05 µg/µL as determined by microplate BCA method
Labeling Method:	Labeled with [U- ¹³ C ₆ , ¹⁵ N ₄]-L-Arginine and [U- ¹³ C ₆ , ¹⁵ N ₂]-L-Lysine
Buffer:	25 mM Tris-HCl, 100 mM glycine, pH 7.3
Storage:	Store at -80°C. Avoid repeated freeze-thaw cycles.
Stability:	Stable for 3 months from receipt of products under proper storage and handling conditions.
RefSeq:	NP_001484
RefSeq Size:	2505
RefSeq ORF:	1341
Synonyms:	1A; GDIL; MRX41; MRX48; OPHN2; RABGD1A; RABGDIA; XAP-4



[View online »](#)

Locus ID: 2664

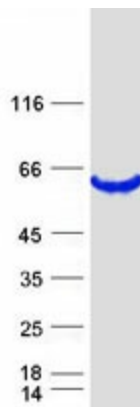
UniProt ID: [P31150](#), [A0A0S2Z3X8](#)

Cytogenetics: Xq28

Summary: GDP dissociation inhibitors are proteins that regulate the GDP-GTP exchange reaction of members of the rab family, small GTP-binding proteins of the ras superfamily, that are involved in vesicular trafficking of molecules between cellular organelles. GDIs slow the rate of dissociation of GDP from rab proteins and release GDP from membrane-bound rabs. GDI1 is expressed primarily in neural and sensory tissues. Mutations in GDI1 have been linked to X-linked nonspecific cognitive disability. [provided by RefSeq, Jul 2008]

Protein Families: Druggable Genome

Product images:



Coomassie blue staining of purified GDI1 protein (Cat# [TP303824]). The protein was produced from HEK293T cells transfected with GDI1 cDNA clone (Cat# [RC203824]) using MegaTran 2.0 (Cat# [TT210002]).