

## Product datasheet for PH303821

### C1QB (NM\_000491) Human Mass Spec Standard

#### Product data:

Product Type:	Mass Spec Standards
Description:	C1QB MS Standard C13 and N15-labeled recombinant protein (NP_000482)
Species:	Human
Expression Host:	HEK293
Expression cDNA Clone or AA Sequence:	RC203821
Predicted MW:	26.7 kDa
Protein Sequence:	>RC203821 protein sequence Red=Cloning site Green=Tags(s)  MMMKIPWGSIPVLMLLLLLGLIDISQAQLSCTGPPAIPGIPGIPGTPGPDGQPGTPGIKGEKGLPGLAGD HGEFGEKGDGPVPGKVPKGPMPKGGPGAPGAPGPKGESGDYKATQKIAFSATRTINVPLRRDQTI RFDHVITNMNNNYEPRSGKFTCKVPGLYYFTYHASSRGNLCVNLMRGRERAQKVVTFCDYAYNTFQVTTG GMVLKLEQGENVFLQATDKNSLLGMEGANSIFSGFLLFPDMEA  TRTRPLEQKLI SEEDLAANDILDYKDDDDKV
Tag:	C-Myc/DDK
Purity:	> 80% as determined by SDS-PAGE and Coomassie blue staining
Concentration:	>0.05 µg/µL as determined by microplate BCA method
Labeling Method:	Labeled with [U- <sup>13</sup> C <sub>6</sub> , <sup>15</sup> N <sub>4</sub> ]-L-Arginine and [U- <sup>13</sup> C <sub>6</sub> , <sup>15</sup> N <sub>2</sub> ]-L-Lysine
Buffer:	25 mM Tris-HCl, 100 mM glycine, pH 7.3
Storage:	Store at -80°C. Avoid repeated freeze-thaw cycles.
Stability:	Stable for 3 months from receipt of products under proper storage and handling conditions.
RefSeq:	<a href="#">NP_000482</a>
RefSeq Size:	1044
RefSeq ORF:	759
Locus ID:	713
UniProt ID:	<a href="#">P02746</a> , <a href="#">A0A024RAB9</a>
Cytogenetics:	1p36.12



[View online »](#)

**Summary:**

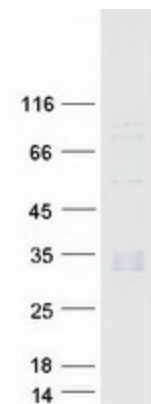
This gene encodes the B-chain polypeptide of serum complement subcomponent C1q, which associates with C1r and C1s to yield the first component of the serum complement system. C1q is composed of 18 polypeptide chains which include 6 A-chains, 6 B-chains, and 6 C-chains. Each chain contains an N-terminal collagen-like region and a C-terminal C1q globular domain. C1q deficiency is associated with lupus erythematosus and glomerulonephritis. [provided by RefSeq, Dec 2016]

**Protein Families:**

Secreted Protein

**Protein Pathways:**

Complement and coagulation cascades, Prion diseases, Systemic lupus erythematosus

**Product images:**

Coomassie blue staining of purified C1QB protein (Cat# [TP303821]). The protein was produced from HEK293T cells transfected with C1QB cDNA clone (Cat# [RC203821]) using MegaTran 2.0 (Cat# [TT210002]).