

## Product datasheet for PH303818

### Integrin beta 1 (ITGB1) (NM\_002211) Human Mass Spec Standard

#### Product data:

Product Type:	Mass Spec Standards
Description:	ITGB1 MS Standard C13 and N15-labeled recombinant protein (NP_002202)
Species:	Human
Expression Host:	HEK293
Expression cDNA Clone or AA Sequence:	RC203818
Predicted MW:	88.4 kDa
Protein Sequence:	>RC203818 protein sequence Red=Cloning site Green=Tags(s)

MNLQPIFWIGLISSVCCVFAQTDENRCLKANAKSCGECIQAGPNCGWCTNSTFLQEGMPTSARDDLEAL  
KKKGCPPDDIENPRGSKDIKKNKNTNRSGTAEKLKPEDITQIQPQQLVLRRLSGEPQTFTLKFKRAED  
YPIDLYLMDLSYSMKDDLENVKSLGTDLMNEMRRITSDFRIGFGSFVEKTVMPYISTTPAKLRNPCTSE  
QNCTSPFSYKNVLSLTNKGEVFNELVGKQRISGNLDSPEGGFDAIMQVAVCGSLIGWRNVTRLLVFSTDA  
GFHFAGDGKLGIVLPNDGQCHLENNMYTMSHYDYPSIAHLVQKLSENNIQTIFAVTEEFQPVYKELKN  
LIPKSAVGTLSANSSNVIQLIIDAYNSLSSEVILENGKLESEGVTISYKSYCKNGVNGTGNGRKCNSISI  
GDEVQFEISITSNKCPKKDSDFKIRPLGFTEEEVILQYICECECQSEGIPESPKCHEGNGTFECGACR  
CNEGRVGRHCECSTDEVNSEDMDAYCRKENSSEICSNNGECVCGQCVCRKRDNTEIYSGKFCECDNFNC  
DRSNGLICGGNGVCKCRVCECNPNYTGACDCSLDTSTCEASNGQICNGRIGICECGVCKCTDPKFQGTCT  
EMCQTCLGVCAEHKECVQCRAFNKGEKKTCTQECYFNITKVESRDKLPQPVQDPVSHCKEKDVEDDCW  
FYFTYSVNGNNEVMHVVENPECPGPDIIPIVAGVVAGIVLIGLALLLIWKLMI IHDRREFAKFEKEK  
MNAKWDTGENPIYKSAVTTVVNPKYEGK

TRTRPLEQKLI SEEDLAANDILDYKDDDDKV

Tag:	C-Myc/DDK
Purity:	> 80% as determined by SDS-PAGE and Coomassie blue staining
Concentration:	>0.05 µg/µL as determined by microplate BCA method
Labeling Method:	Labeled with [U- <sup>13</sup> C <sub>6</sub> , <sup>15</sup> N <sub>4</sub> ]-L-Arginine and [U- <sup>13</sup> C <sub>6</sub> , <sup>15</sup> N <sub>2</sub> ]-L-Lysine
Buffer:	25 mM Tris-HCl, 100 mM glycine, pH 7.3
Storage:	Store at -80°C. Avoid repeated freeze-thaw cycles.
Stability:	Stable for 3 months from receipt of products under proper storage and handling conditions.
RefSeq:	<a href="#">NP_002202</a>



[View online >](#)

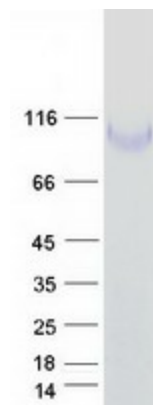
RefSeq Size:	3879
RefSeq ORF:	2394
Synonyms:	CD29; FNRB; GPIIA; MDF2; MSK12; VLA-BETA; VLAB
Locus ID:	3688
UniProt ID:	<a href="#">P05556</a>
Cytogenetics:	10p11.22

**Summary:** Integrins are heterodimeric proteins made up of alpha and beta subunits. At least 18 alpha and 8 beta subunits have been described in mammals. Integrin family members are membrane receptors involved in cell adhesion and recognition in a variety of processes including embryogenesis, hemostasis, tissue repair, immune response and metastatic diffusion of tumor cells. This gene encodes a beta subunit. Multiple alternatively spliced transcript variants which encode different protein isoforms have been found for this gene. [provided by RefSeq, Jul 2008]

**Protein Families:** Druggable Genome, ES Cell Differentiation/IPS, Transmembrane

**Protein Pathways:** Arrhythmogenic right ventricular cardiomyopathy (ARVC), Axon guidance, Cell adhesion molecules (CAMs), Dilated cardiomyopathy, ECM-receptor interaction, Focal adhesion, Hypertrophic cardiomyopathy (HCM), Leukocyte transendothelial migration, Pathogenic Escherichia coli infection, Pathways in cancer, Regulation of actin cytoskeleton, Small cell lung cancer

### Product images:



Coomassie blue staining of purified ITGB1 protein (Cat# [TP303818]). The protein was produced from HEK293T cells transfected with ITGB1 cDNA clone (Cat# [RC203818]) using MegaTran 2.0 (Cat# [TT210002]).