

Product datasheet for PH303811

HLA DMB (HLA-DMB) (NM_002118) Human Mass Spec Standard

Product data:

Product Type:	Mass Spec Standards
Description:	HLA MS Standard C13 and N15-labeled recombinant protein (NP_002109)
Species:	Human
Expression Host:	HEK293
Expression cDNA Clone or AA Sequence:	RC203811
Predicted MW:	28.9 kDa
Protein Sequence:	>RC203811 protein sequence Red=Cloning site Green=Tags(s)
	MITFLPLLLGLSLGCTGAGGFVAHVESTCLLDDAGTPKDFTYCISFNKDLLTCWDPPEENKMAPCEFGVLN SLANVLSQHLNQQDTLMQRLRNGLQNCATHQPFWGSNTNRTRPPSVQVAKTTPFNTREPVMLACYWGF YPAEVTITWRKNGKLVMPHSSAHKTAQPNGDWTYQTLSHLALTPSYGDTYTCVVEHIGAPEPILRDWTPG LSPMQTLKVSVAVTLGLGLIIFSLGVISWRRAGHSSYTPLPGSNYSEGWHIS
	TRTRPLEQKLI SEEDLAANDILDYKDDDDKV
Tag:	C-Myc/DDK
Purity:	> 80% as determined by SDS-PAGE and Coomassie blue staining
Concentration:	>0.05 µg/µL as determined by microplate BCA method
Labeling Method:	Labeled with [U- ¹³ C ₆ , ¹⁵ N ₄]-L-Arginine and [U- ¹³ C ₆ , ¹⁵ N ₂]-L-Lysine
Buffer:	25 mM Tris-HCl, 100 mM glycine, pH 7.3
Storage:	Store at -80°C. Avoid repeated freeze-thaw cycles.
Stability:	Stable for 3 months from receipt of products under proper storage and handling conditions.
RefSeq:	NP_002109
RefSeq Size:	1412
RefSeq ORF:	789
Synonyms:	D6S221E; RING7
Locus ID:	3109
UniProt ID:	P28068 , A0A1V0E3P2



[View online »](#)

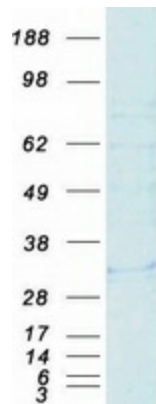
Cytogenetics: 6p21.32

Summary: HLA-DMB belongs to the HLA class II beta chain paralogues. This class II molecule is a heterodimer consisting of an alpha (DMA) and a beta (DMB) chain, both anchored in the membrane. It is located in intracellular vesicles. DM plays a central role in the peptide loading of MHC class II molecules by helping to release the CLIP (class II-associated invariant chain peptide) molecule from the peptide binding site. Class II molecules are expressed in antigen presenting cells (APC: B lymphocytes, dendritic cells, macrophages). The beta chain is approximately 26-28 kDa and its gene contains 6 exons. Exon one encodes the leader peptide, exons 2 and 3 encode the two extracellular domains, exon 4 encodes the transmembrane domain and exon 5 encodes the cytoplasmic tail. [provided by RefSeq, Jul 2008]

Protein Families: Transmembrane

Protein Pathways: Allograft rejection, Antigen processing and presentation, Asthma, Autoimmune thyroid disease, Cell adhesion molecules (CAMs), Graft-versus-host disease, Systemic lupus erythematosus, Type I diabetes mellitus, Viral myocarditis

Product images:



Coomassie blue staining of purified HLA-DMB protein (Cat# [TP303811]). The protein was produced from HEK293T cells transfected with HLA-DMB cDNA clone (Cat# [RC203811]) using MegaTran 2.0 (Cat# [TT210002]).