

## Product datasheet for PH303805

### Papillary renal cell carcinoma (PRCC) (NM\_005973) Human Mass Spec Standard

#### Product data:

Product Type:	Mass Spec Standards
Description:	PRCC MS Standard C13 and N15-labeled recombinant protein (NP_005964)
Species:	Human
Expression Host:	HEK293
Expression cDNA Clone or AA Sequence:	RC203805
Predicted MW:	52.4 kDa
Protein Sequence:	>RC203805 protein sequence Red=Cloning site Green=Tags(s)  MSLVAYASSDESEPDEAEPEPEEEEEAVAPTS GPALGGLFASLPAPKGPALLPPPPQMLAPAFPPPLLLPP PTGDPRLQPPPLPFGLGGFPPPGVSPA EAAGVGEGLGLGLPSRGPGLNLPPIGGAGPPLGLPKPKK RKEPVKIAAPELHKGSDSEDEPTKKKTILQGSSEGTLSALLPQPKNLTVKETNRLLLPHAFSRKPSD GSPDTKPSRLASKTKTSSLAPVVGTTTTTSPSAIKAAAKSAALQVTKQITQEEDDSDEEVAPENFFSLP EKAEPGPVEPYPIPTVPEELPPGTEPEPAFQDDAANAPLEFKMAAGSSGAPWMPKPGDDYSYNQFSTY GDANAAGAYYQDYSSGGYPAQDPALVPTQEIAPDASFIDDEAFKRLQGKRNRGREEINFVEIKGDDQLS GAQQWMTKSLTEEKTMSFSKKGGEQPTGQRRKHQITYLIHQAKERELELKNTWSENKLSRRQTQAKYGF  TRTRPLEQKLI SEEDLAANDILDYKDDDDKV
Tag:	C-Myc/DDK
Purity:	> 80% as determined by SDS-PAGE and Coomassie blue staining
Concentration:	>0.05 µg/µL as determined by microplate BCA method
Labeling Method:	Labeled with [U- 13C6, 15N4]-L-Arginine and [U- 13C6, 15N2]-L-Lysine
Buffer:	25 mM Tris-HCl, 100 mM glycine, pH 7.3
Storage:	Store at -80°C. Avoid repeated freeze-thaw cycles.
Stability:	Stable for 3 months from receipt of products under proper storage and handling conditions.
RefSeq:	<u>NP_005964</u>
RefSeq Size:	2142
RefSeq ORF:	1473



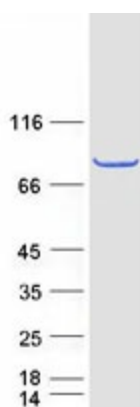
[View online »](#)

**Synonyms:** RCCP1; TPRC  
**Locus ID:** 5546  
**UniProt ID:** [Q92733](#), [A0A0S2Z456](#), [Q96FT4](#)  
**Cytogenetics:** 1q23.1

**Summary:** This gene encodes a protein that may play a role in pre-mRNA splicing. Chromosomal translocations (X;1)(p11;q21) that result in fusion of this gene to TFE3 (GenelD 7030) have been associated with papillary renal cell carcinoma. A PRCC-TFE3 fusion protein is expressed in affected carcinomas and is likely associated with altered gene transactivation. This fusion protein has also been associated with disruption of the cell cycle.[provided by RefSeq, Aug 2010]

**Protein Families:** Druggable Genome

### Product images:



Coomassie blue staining of purified PRCC protein (Cat# [TP303805]). The protein was produced from HEK293T cells transfected with PRCC cDNA clone (Cat# [RC203805]) using MegaTran 2.0 (Cat# [TT210002]).