

## Product datasheet for PH303798

### Dystrobrevin beta (DTNB) (NM\_183361) Human Mass Spec Standard

#### Product data:

Product Type:	Mass Spec Standards
Description:	DTNB MS Standard C13 and N15-labeled recombinant protein (NP_899205)
Species:	Human
Expression Host:	HEK293
Expression cDNA Clone or AA Sequence:	RC203798
Predicted MW:	63.8 kDa
Protein Sequence:	>RC203798 protein sequence Red=Cloning site Green=Tags(s)

MIEESGNKRKTMAEKRQLFIEMRAQNFVDVIRLSTYRTACKLRFVQKRCNLHLVDIWNMIEAFRDNGLNTL  
DHTTEISVSRLETVISSIYYQLNKRLPSTHQISVEQSISLLLNFMIAAYDSEGRGKLTVFSVKAMLATMC  
GGKMLDKLRYVFSQMSDSNGLMIFSKFDQFLKEVLKLPPTAVFEGPSFGYTEHSVRTCFPQQRKIMLNMFL  
DTMMADPPPQCLVWLPLMHLRAHVENVFHPVECSYCRCESSMMGFRYRCQQCHNYQLCQNCFWRGHAGGPH  
SNQHQMKEHSSWKSPAKKLSHAISKSLGCVPTREPPHPVFPEQPEKPLDLAHIVPPRPLTNMNDTMVSHM  
SSGVPTPTKSVLDSPSRLDEEHRLIARYAARLAAEAGNVTRPPTDL SFNFDANKQQRQLIAELENKNREI  
LQEIQRRLREHEQASQPTPEKAQQNPTLLAELRLLRQRKDELEQRMSALQESRRELMVQLEELMKLLKAQ  
ATGSPHTSPTHGGRRPMPVVRST SAGSTPTHCPQDSL SGVGGDVQEAFQAEEGAE EEEEEKMQNGKDRG

TRTRPLEQKLI SEEDLAANDILDYKDDDDKV

Tag:	C-Myc/DDK
Purity:	> 80% as determined by SDS-PAGE and Coomassie blue staining
Concentration:	>0.05 µg/µL as determined by microplate BCA method
Labeling Method:	Labeled with [U- <sup>13</sup> C <sub>6</sub> , <sup>15</sup> N <sub>4</sub> ]-L-Arginine and [U- <sup>13</sup> C <sub>6</sub> , <sup>15</sup> N <sub>2</sub> ]-L-Lysine
Buffer:	25 mM Tris-HCl, 100 mM glycine, pH 7.3
Storage:	Store at -80°C. Avoid repeated freeze-thaw cycles.
Stability:	Stable for 3 months from receipt of products under proper storage and handling conditions.
RefSeq:	<a href="#">NP_899205</a>
RefSeq Size:	2328
RefSeq ORF:	1680

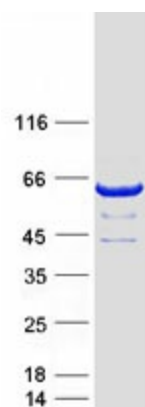


[View online »](#)

Locus ID: 1838  
UniProt ID: [O60941](#)  
Cytogenetics: 2p23.3

**Summary:** This gene encodes dystrobrevin beta, a component of the dystrophin-associated protein complex (DPC). The DPC consists of dystrophin and several integral and peripheral membrane proteins, including dystroglycans, sarcoglycans, syntrophins and dystrobrevin alpha and beta. The DPC localizes to the sarcolemma and its disruption is associated with various forms of muscular dystrophy. Dystrobrevin beta is thought to interact with syntrophin and the DP71 short form of dystrophin. [provided by RefSeq, Mar 2016]

### Product images:



Coomassie blue staining of purified DTNB protein (Cat# [TP303798]). The protein was produced from HEK293T cells transfected with DTNB cDNA clone (Cat# [RC203798]) using MegaTran 2.0 (Cat# [TT210002]).